

The logo for 'Advanced' features a large, stylized letter 'A' in a dark, bold font. A thick, black, curved line extends from the top right of the 'A', ending in a small, square icon with a circular pattern inside. The background is a light blue gradient with faint, glowing hexagonal patterns and a faint wireframe structure of a building or industrial frame.

Advanced

Sistema Modular

SISTEMA MODULAR

TUBULAR FRAMING ALUMINUM (TFA)



Catálogo 2025

Advanced

— Sistema Modular —



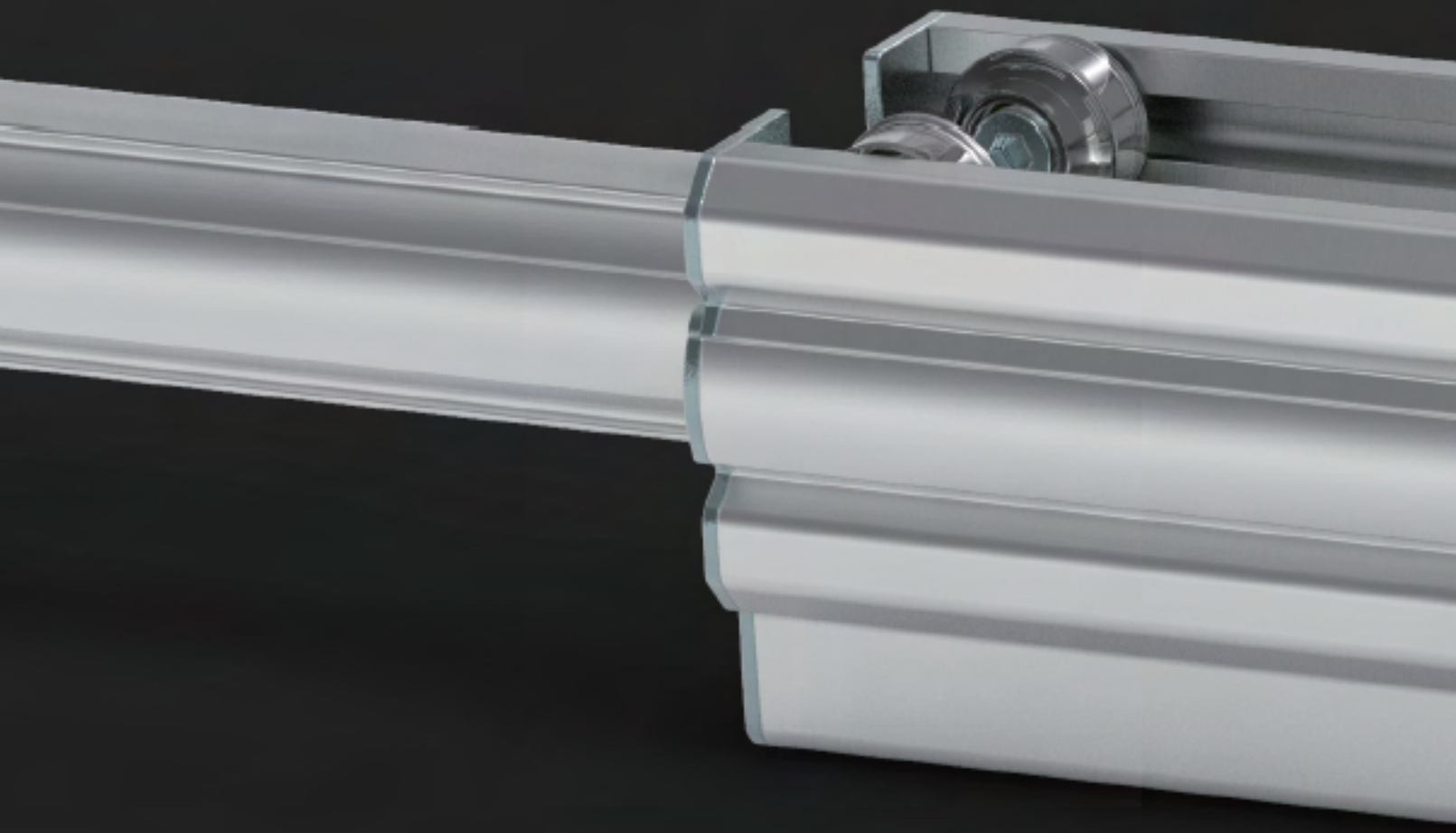
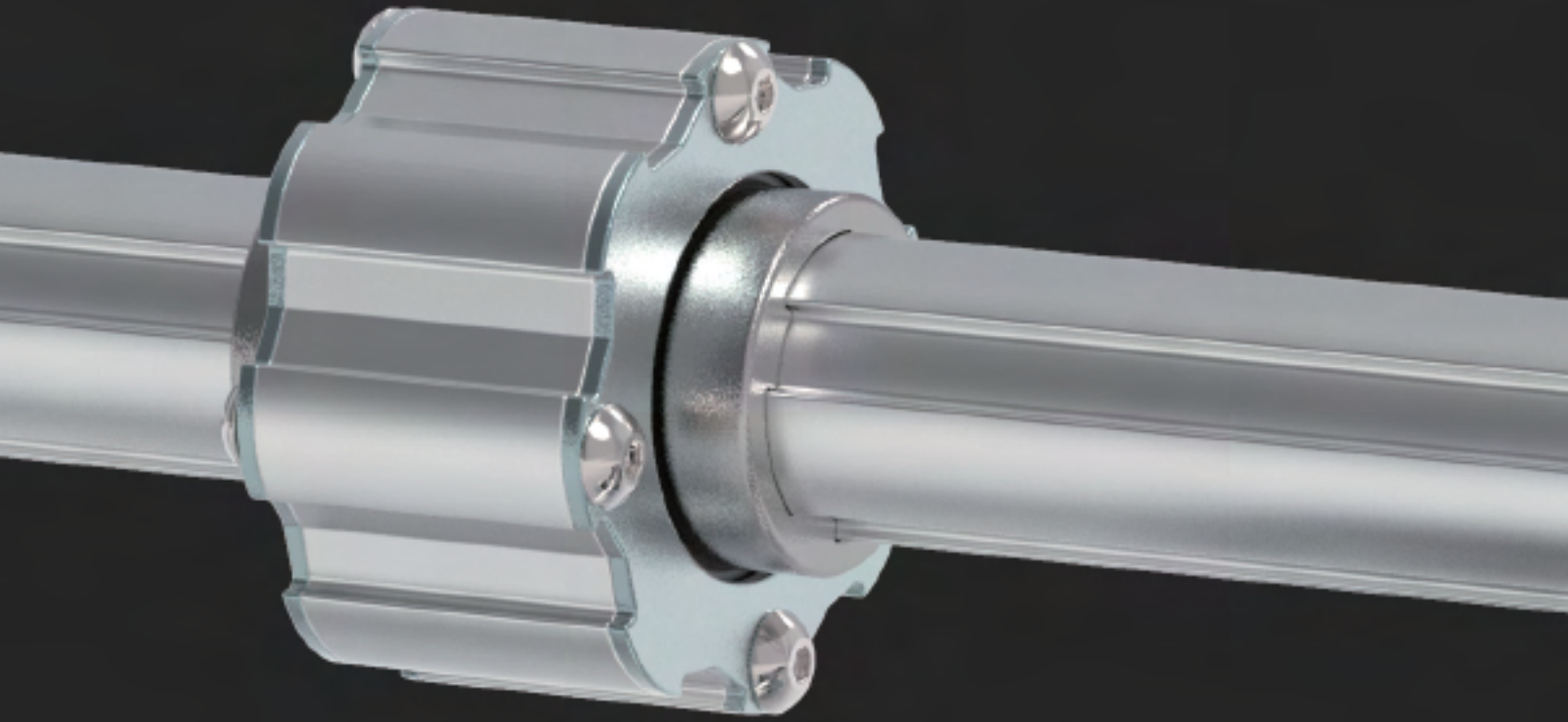
Fundados y ubicados en Tijuana, B.C. en 2010, con presencia en San Diego, CA, somos una empresa líder en el sector de la distribución a toda la república mexicana de insumos industriales, así como expertos en proyectos de ingeniería e infraestructura.

Hemos ampliado nuestro alcance de certificación ISO 9001-2015 el día 12 de Junio del 2024, ahora a Servicio de venta de perfil estructural e insumos industriales, así como el diseño y manufactura de proyectos estructurales. En TJS D DISTRIBUIDORES ofrecemos soluciones para todas las tareas de diseño y construcción de sistemas modulares, garantizando servicio, calidad y precio.

Contáctanos para que un experto pueda ayudarte con el diseño de tus estructuras, creación de proyectos, montaje y mucho más.







ÍNDICE

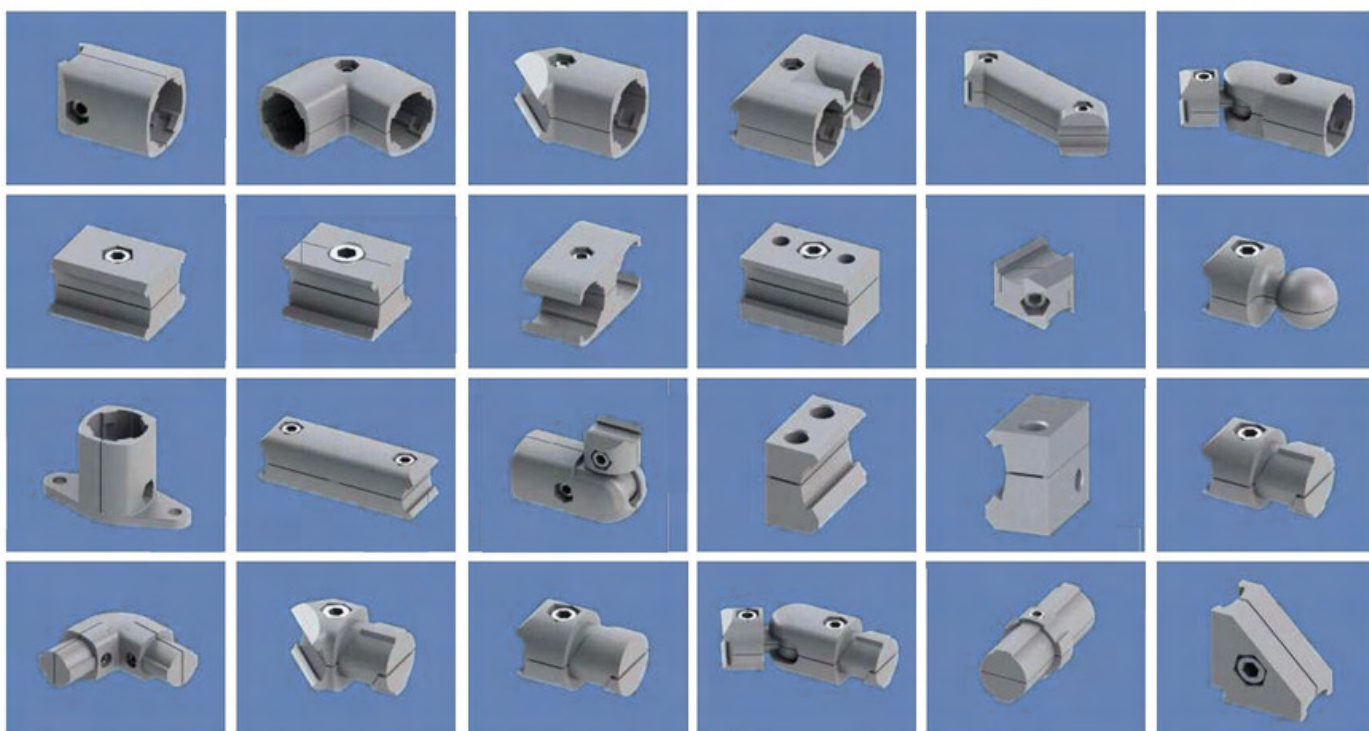
Profile Series

Pag. 3-7



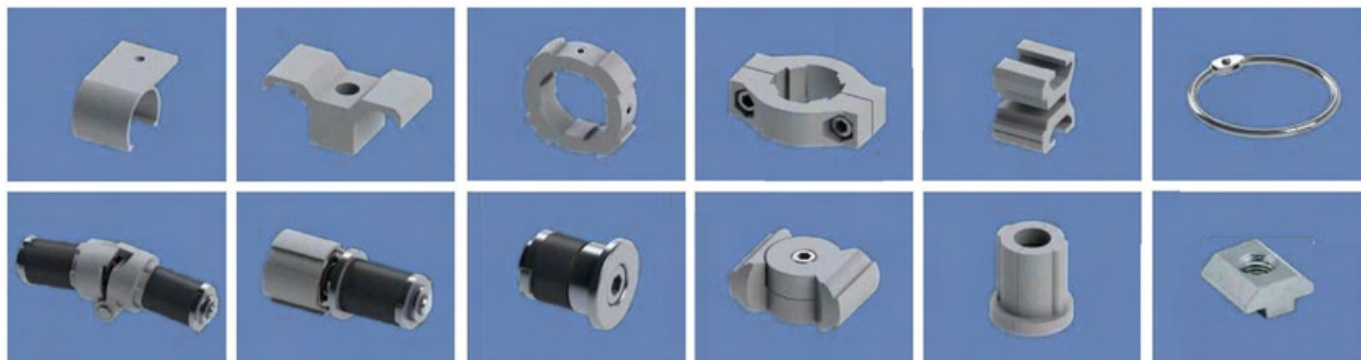
Connector Series

Pag. 8-21



Metal Accessory Series

Pag. 22-33

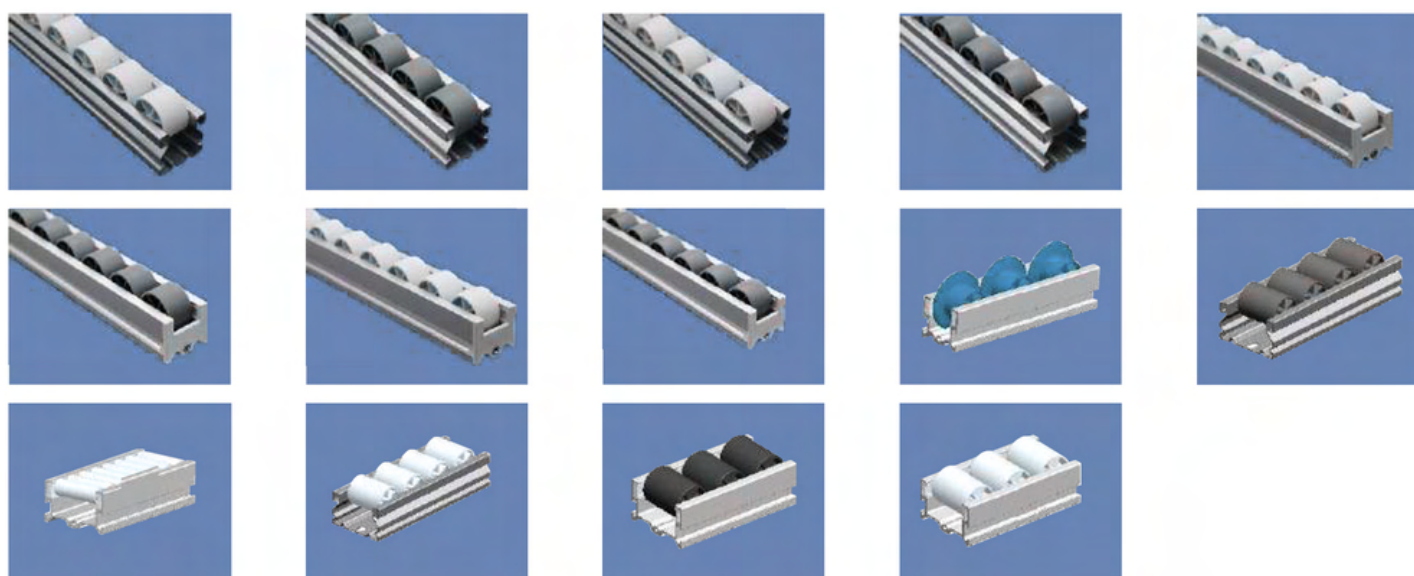




Non-Metallic Auxiliary Series Pag. 34-41

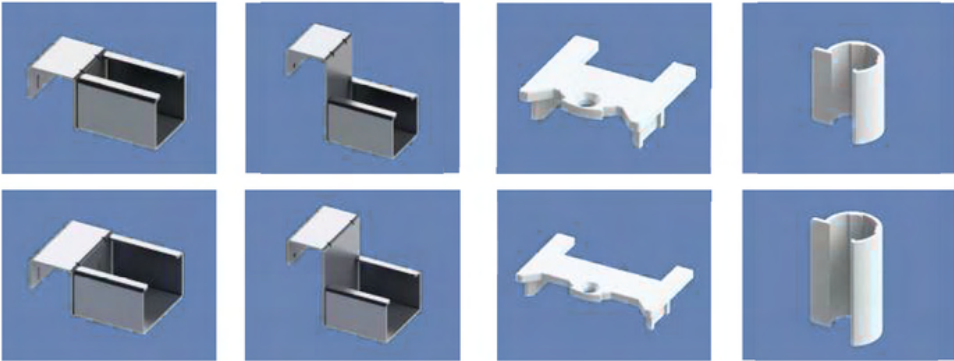


Flow Roller Track Series Pag. 42-49



Product Catalog

Flow Roller Track Series Pag. 50-53



Caster Series Pag. 54-56







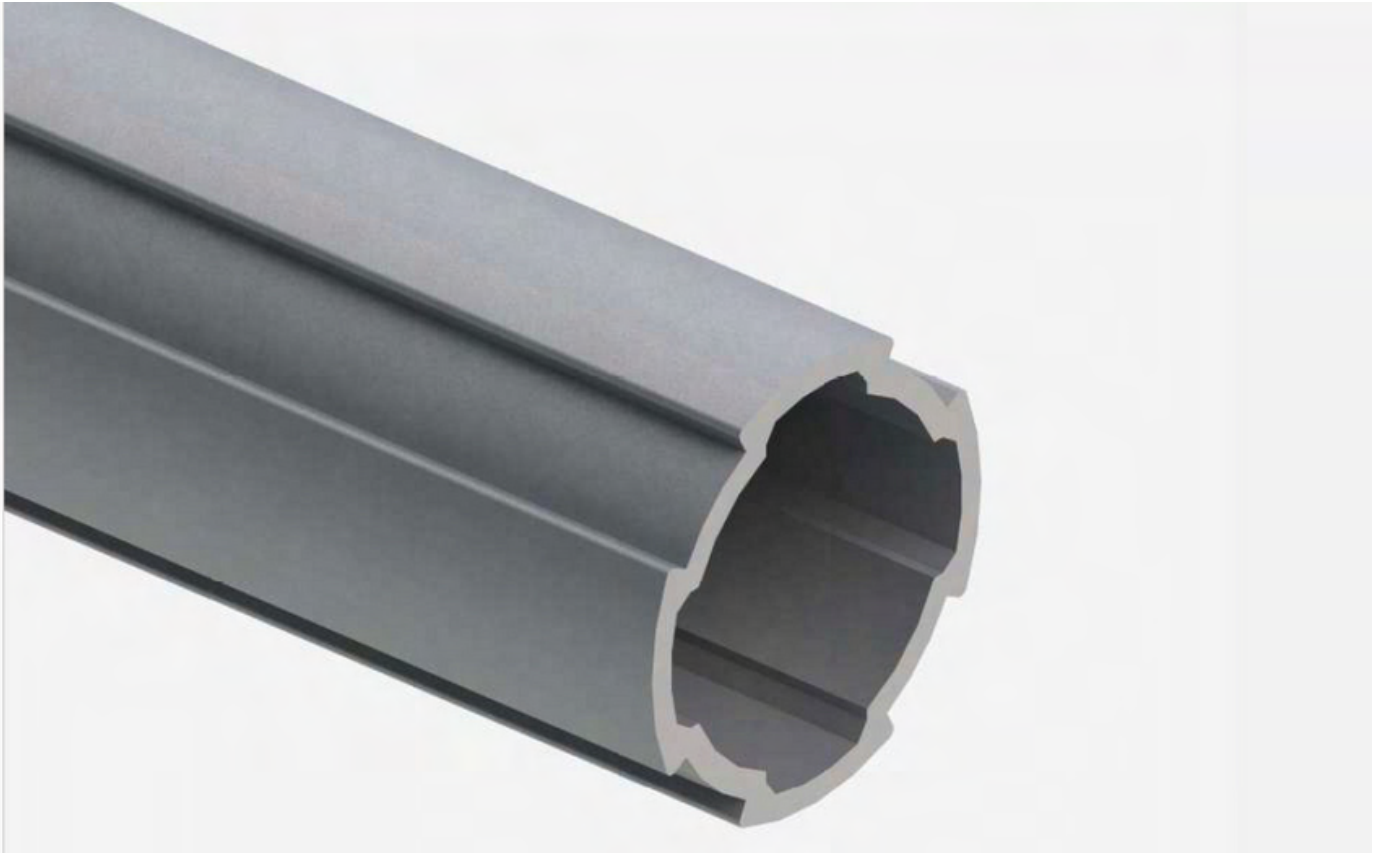
TUBULAR DE ALUMINIO TUBULAR FRAMING ALUMINUM

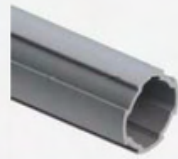
- ✓ Cortos tiempos de diseño y ejecución
- ✓ Materiales reutilizables
- ✓ Disponibilidad
- ✓ Flexibilidad y adaptación
- ✓ Menores Costos



Lean Pipe Profile

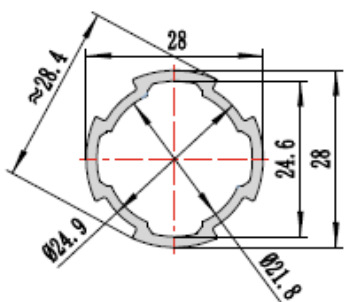
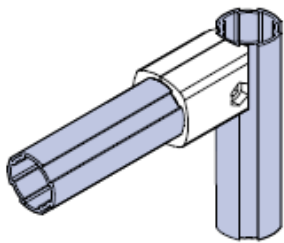
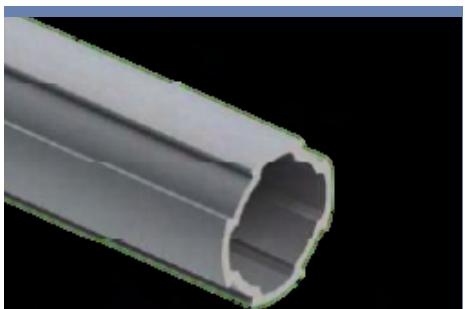
TFA 28





Lean Pipe Profile

General Frame

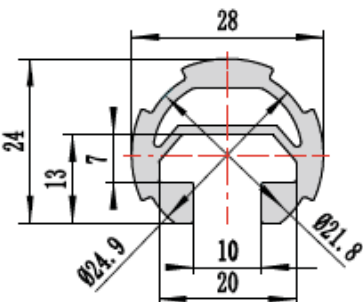
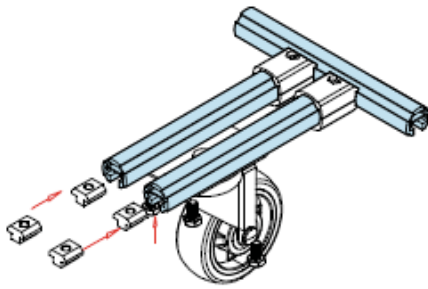


General Frame	
Model	TFA.28-01A
NW	410 g/m
PQ	10 set
L	4 m
Material	
Aluminum Alloy 6005T6	

RECOMMENDATIONS

La mayoría de los productos 28 series son recomendados para todas las aplicaciones de estructuras.
Main of 28 series GF are suitable for all products of application structure.

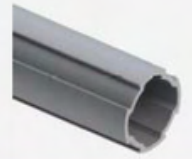
"T" Slot Frame



T Slot Frame	
Model	TFA.28-02A
NW	64 g/m
PQ	10 set
L	4 m
Material	
Aluminum Alloy 6005T6	

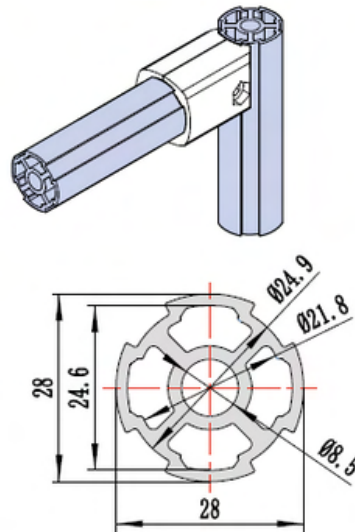
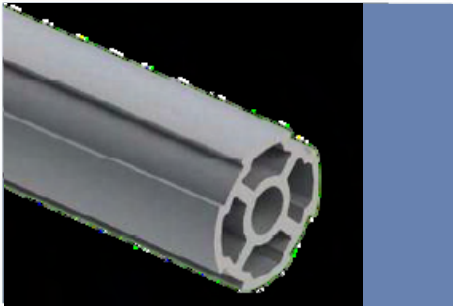
RECOMMENDATIONS

Son compatibles con las ruedas y patas, así como otros accesorios y pueden ser instalados por las ranuras.
Compatible with casters, and other accessories can be installed with the built-in slidernut.



Lean Pipe Profile

Loaded Frame



Loaded Frame

Model TFA.28-03A

NW 720 g/m

PQ 10 set

L 4 m

Material

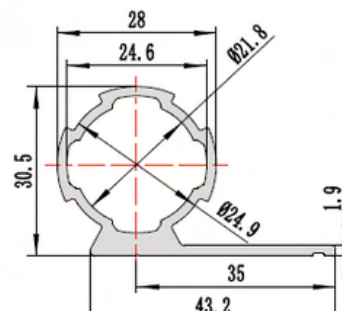
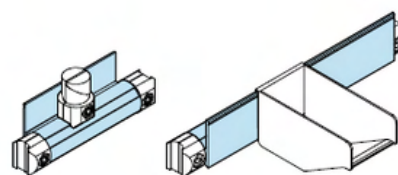
Aluminum Alloy 6005T6

RECOMMENDATIONS

Carga reforzada parcialmente con estructura local.

Load reinforcement of partial local structure.

PC Frame (Single Side)



PC Frame (Single side)

Model TFA.28-04A

NW 666 g/m

PQ 12 set

L 4 m

Material

Aluminum Alloy 6005T6

RECOMMENDATIONS

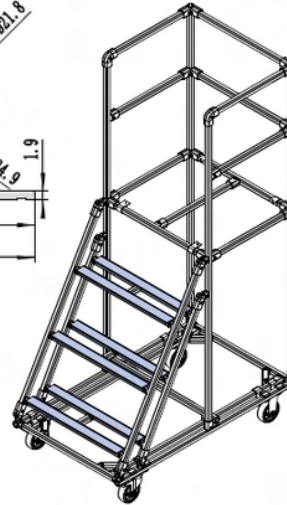
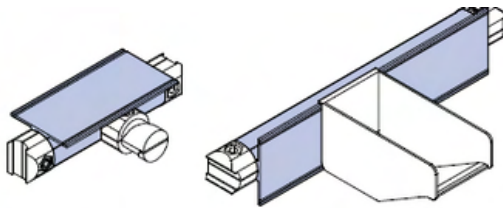
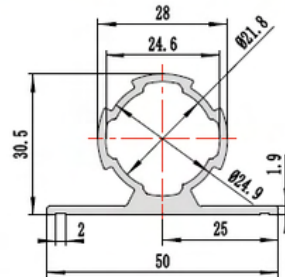
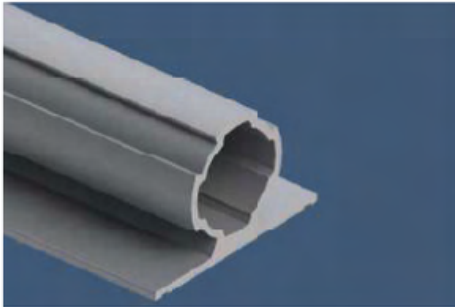
Con forma de L de un lado, para material suspendido o como tope.

L one side, Material container suspending or as fender and hinder.



Lean Pipe Profile

PC Frame (Both Sides)



PC Frame (Single side)

Model TFA.28-06A

NW 695 g/m

PQ 10 set

L 4 m

Material

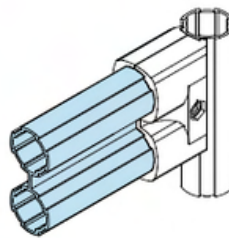
Aluminum Alloy 6005T6

RECOMMENDATIONS

El lado L actúa como defensa, ayudando a esconder la estructura.

L both sides, as fender, hinder or loaded structure.

General Frame (Double)



General Frame (Double)

Model TFA.28-05A

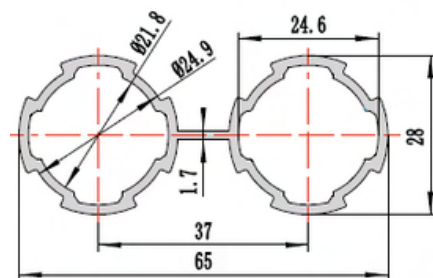
NW 875 g/m

PQ 8 set

L 4 m

Material

Aluminum Alloy 6005T6



RECOMMENDATIONS

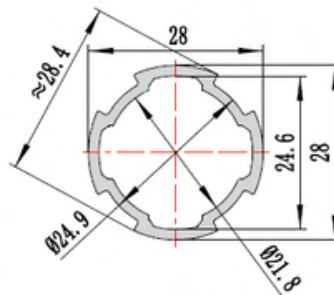
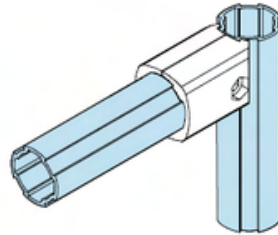
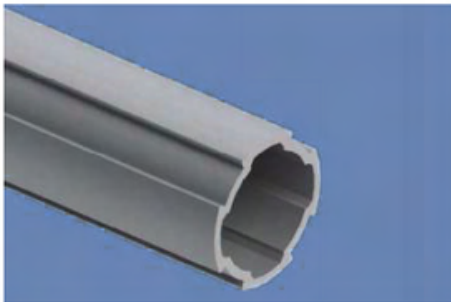
Mayormente usado para material pesado y productos largos, o para reforzar la estructura.

Mainly used for the loaded requirement of ultra-long products or local reinforcement of structure.



Lean Pipe Profile

General Frame



General Frame	
Model	TFA.28-07A
PQ	10 set
L	4 m
Material	
Aluminum Alloy 6005T6	

El General Frame es recomendable para la estructura principal de productos livianos o como marco auxiliar.

Thinner GF is applied to the main structure of lightweight product or as an auxiliary frame
NOTE: it is not applicable to all inner types.





TFA J28 Connector

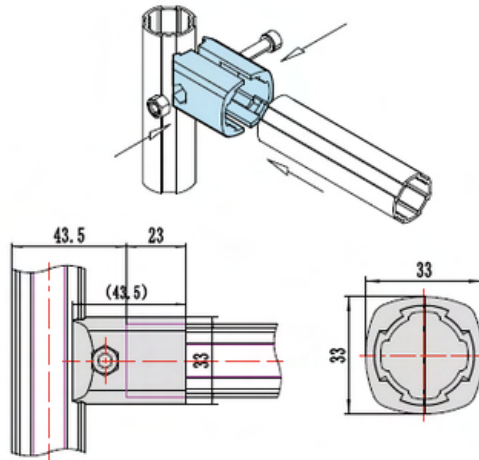
TFA J28





TFA J28 Connector

Multi Connector Outer Type



Multi Connector Outer Type

Model TFA.J28-A01

NW 6 g

PQ 10 set

TW 10.3 Kg

PD 305*235*165 (mm)

Material

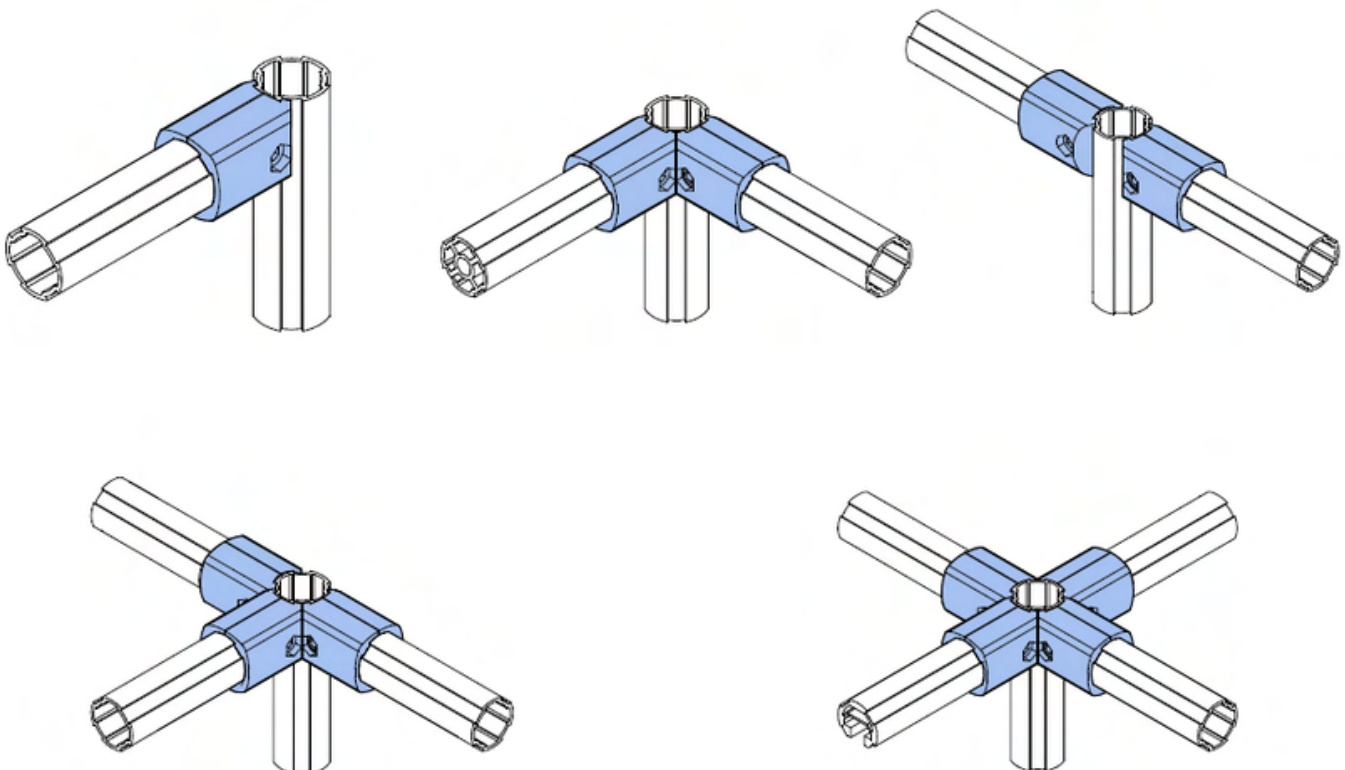
ADC12

- Hex socket scre M6x20 s=6 Zinc Plated
- Hex Nut M6 m=7 s=10 Zinc Plated

RECOMMENDATIONS

Generalmente conectado con cuatro direcciones al marco en cualquier estructura multidimensional.

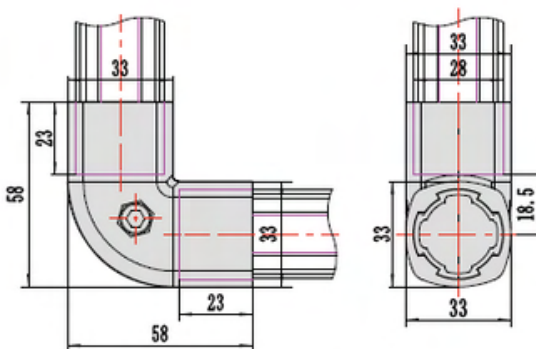
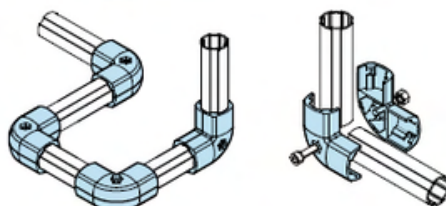
Generally connected with four directions of frame into any multi-dimensional structure, main connector of frame.





TFA J28 Connector

Connector Outer Type 90°



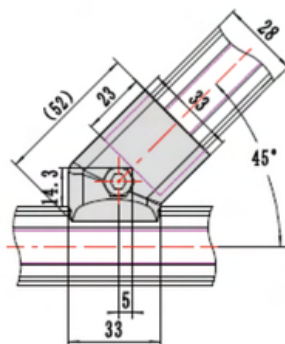
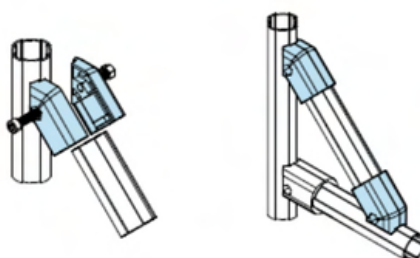
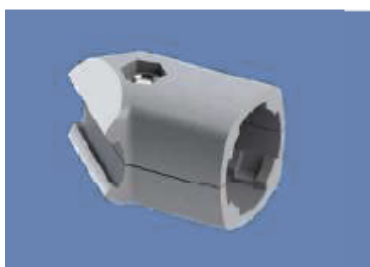
Connector Outer Type 90°	
Model	TFA.J28-A90
NW	98 g
PQ	72 set
TW	7.3 Kg
PD	305*235*165 (mm)
Material	
ADC12	
<ul style="list-style-type: none"> Hex socket screw M6x20 s=6 Zinc Plated Hex Nut M6 m=7 s=10 Zin Plated 	

RECOMMENDATIONS

Usado para conexiones de 90° en ambos marcos.

Used for 90° connection fro both frames.

Connector Outer Type 45°



Connector Outer Type 90°	
Model	TFA.J28-A45
NW	65 g
PQ	144 set
TW	9.6 Kg
PD	305*235*165 (mm)
Material	
ADC12	
<ul style="list-style-type: none"> Hex socket screw M6x20 s=6 Zinc Plated Hex Nut M6 m=7 s=10 Zin Plated 	

RECOMMENDATIONS

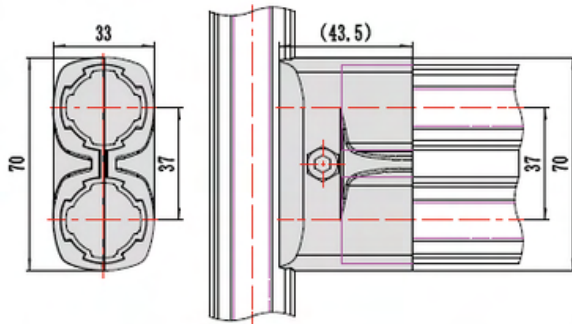
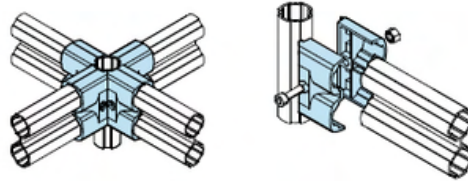
Usado como refuerzo del Angle Joint.

Used for reinforcement at right Angle Joint.



TFA J28 Connector

General Connector (double)



General Connector (Double)

Model TFA.J28-A06

NW 119 g

PQ 80 set

TW 9.8 Kg

PD 305*235*
165 (mm)

Material

ADC12

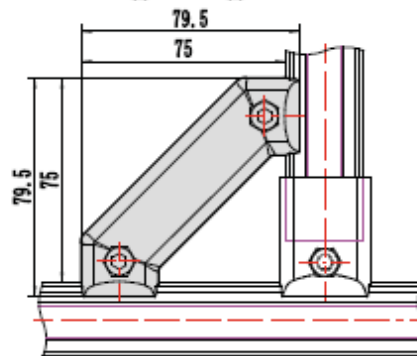
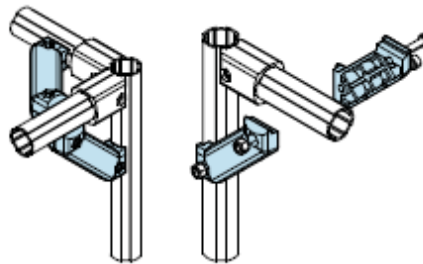
- Hex socket screw M6x20 s=6 Zinc Plated
- Hex Nut M6 m=7 s=10 Zinc Plated

RECOMMENDATIONS

Compatible con TFA.28-05A.

Matched with TFA.28-05A.

Point Connector



Point Connector

Model TFA.J28-A454

NW 125 g

PQ 90 set

TW 11.5 Kg

PD 305*235*
165 (mm)

Material

ADC12

- Hex socket screw 8.8 M6x20 s=6 Zinc Plated
- Hex Nut M6 m=7 s=10 Zinc Plated

RECOMMENDATIONS

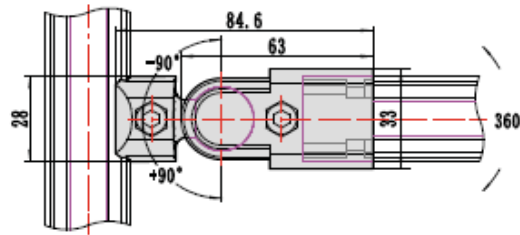
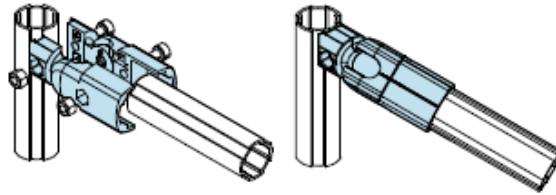
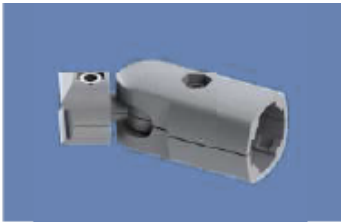
Usado como refuerzo del Angle Joint.

Used for reinforcement at right Angle Joint.



TFA J28 Connector

Free Connector Outer Type



Free Connector Outer Type

Model	TFA.J28-A180
NW	124 g
PQ	8.8 set
TW	11.1 Kg
PD	305*235*165 (mm)

Material

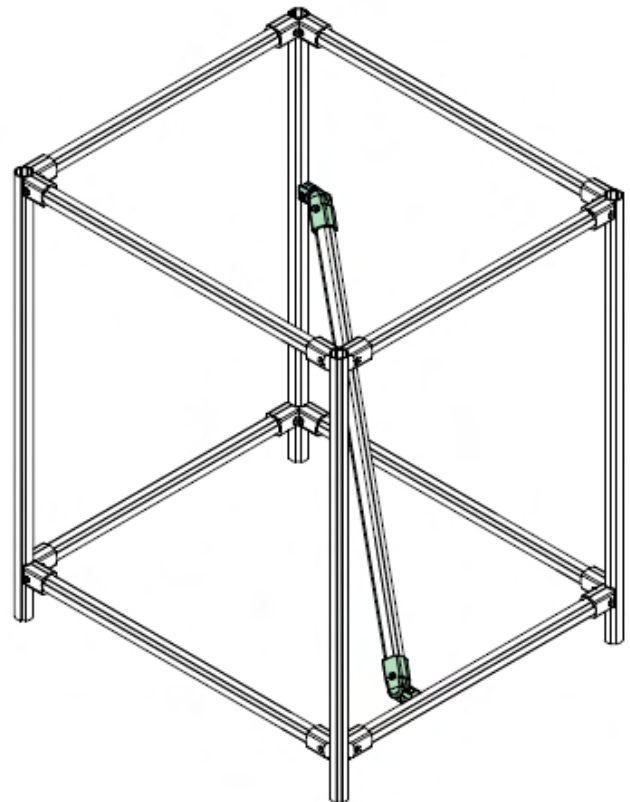
ADC12

- Hex socket screw 8.8 M6x20 s=6 Zinc Plated
- Hex Nut M6 m=7 s=10 Zinc Plated

RECOMMENDATIONS

Usado como refuerzo del Ángulo en variables de conexiones de 180°, o cualquier estructura con Ángulos.

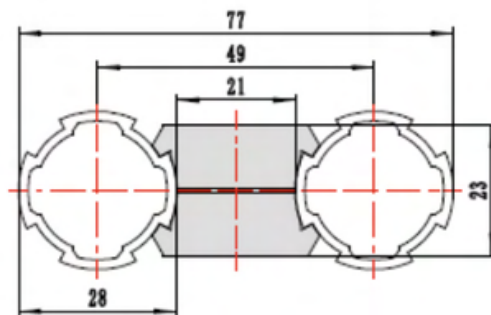
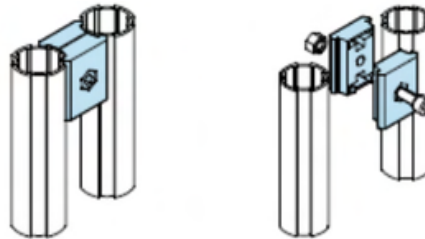
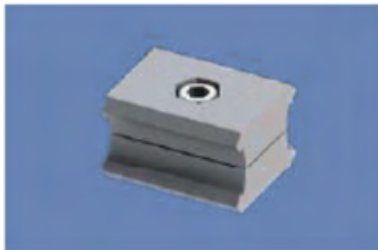
Used for 180° variable Angle reinforcement connection, or any Angle structure design.





TFA J28 Connector

A Parallel Connector A



Parallel Connector A

Model TFA.J28-A03

NW 50 g

PQ 318 set

TW 16.2 Kg

PD 305*235*165 (mm)

Material

ADC12

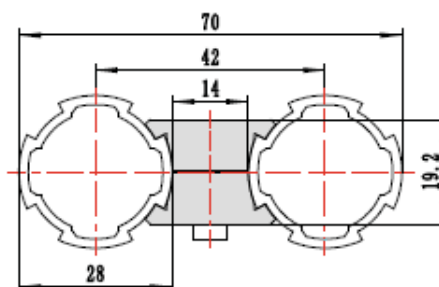
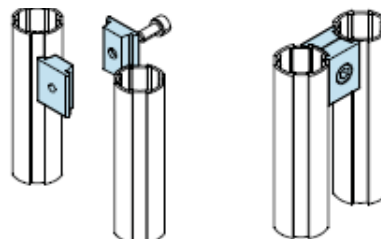
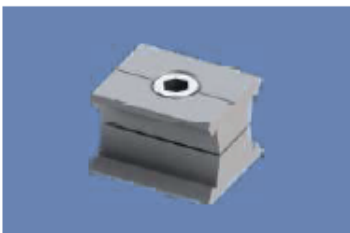
- Hex socket screw 8.8 M6x20 s=6 Zinc Plated
- Hex Nut M6 m=7 s=10 Zinc Plated

RECOMMENDATIONS

Usados para funciones de refuerzos extendidos o locales.

Used for extending fixed or locally reinforcement functions.

A Parallel Connector B



Parallel Connector B

Model TFA.J28-A09

PD 305*235*165 (mm)

Material

6005T6

- Hex socket screw 8.8 M6x14 s=6 Zinc Plated

RECOMMENDATIONS

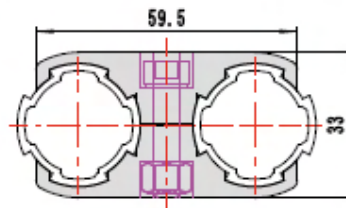
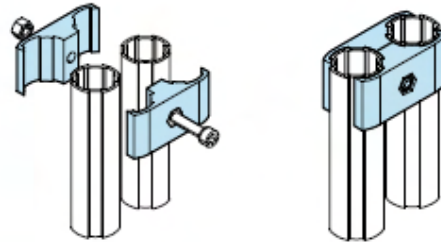
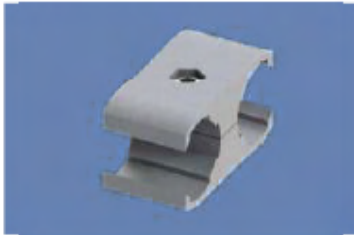
Compatible con TFA.J28-04, con la misma función de TFA.J28-03.

Matched with TFA.J28-04, same function as TFA.J28-03.



TFA J28 Connector

Parallel Holder



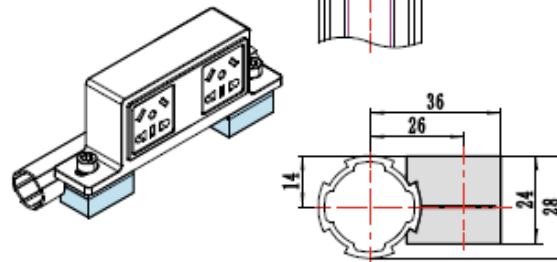
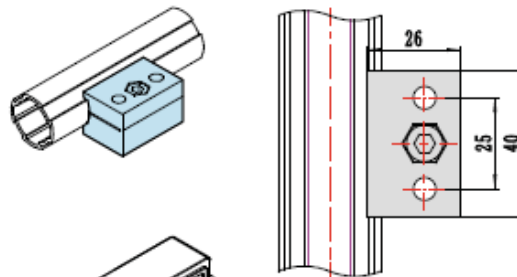
Parallel Holder	
Model	TFA.J28-A05
NW	73 g
PQ	128 set
TW	9.6 Kg
PD	305*235*165 (mm)

- Material**
- ADC12
- Hex socket screw 8.8 M6x25 s=6 Zinc Plated
 - Hex Nut M6 m=7 s=10 Zinc Plated

RECOMMENDATIONS

Usado para combinaciones de conexiones: mesas de trabajo, racks, conveyors, etc.
Used for combination connection: worktable, material rack and flow roller rack, etc.

Connector Piece



Parallel Holder	
Model	TFA.J28-A02
NW	57 g
PQ	336 set
TW	19.5 Kg
PD	305*235*165 (mm)

- Material**
- ADC12
- Hex socket screw 8.8 M6x16 s=6 Zinc Plated
 - Hex Nut M6 m=7 s=10 Zinc Plated

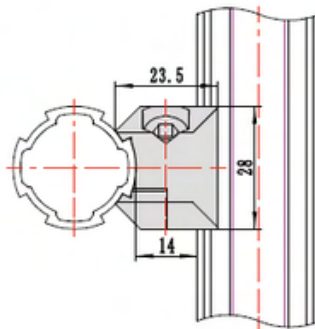
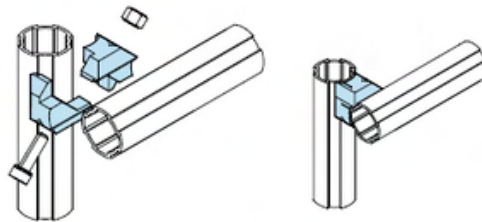
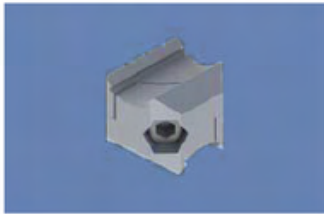
RECOMMENDATIONS

Unidad funcional para instalación de accesorios en estructuras principales.
Functional unit for main structure accessories installation.



TFA J28 Connector

Connector Piece



Parallel Holder

Model	TFA.J28-A04
NW	33 g
PQ	300 set
TW	10.3 Kg
PD	305*235*165 (mm)

Material

ADC12

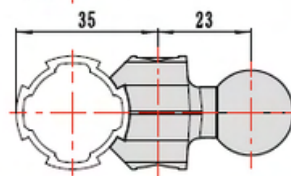
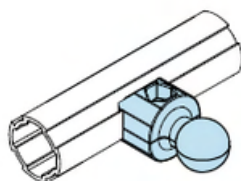
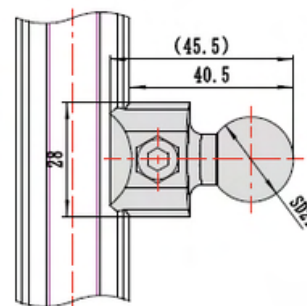
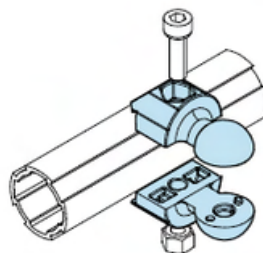
- Hex socket screw 8.8 M6x20 s=6 Zinc Plated
- Hex Nut M6 m=7 s=10 Zinc Plated

RECOMMENDATIONS

Unidad funcional para instalación de accesorios en estructuras principales.

Functional unit for main structure accessories installation.

Hook RH



Parallel Holder

Model	TFA.J28-A12
NW	43 g
PQ	250 set
TW	10.8 Kg
PD	305*235*165 (mm)

Material

ADC12

- Hex socket screw 8.8 M6x20 s=6 Zinc Plated
- Hex Nut 8.8 M6 m=7 s=10 Zinc Plated

RECOMMENDATIONS

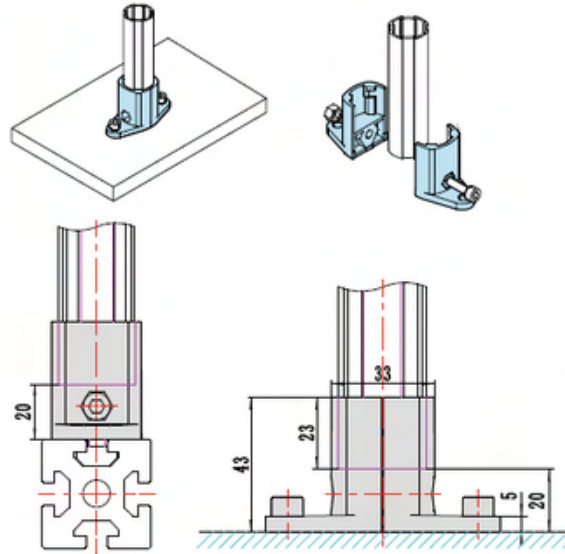
Gancho para herramientas en suspensión con cuerda.

Hook for suspending tools with rope.



TFA J28 Connector

T Connector

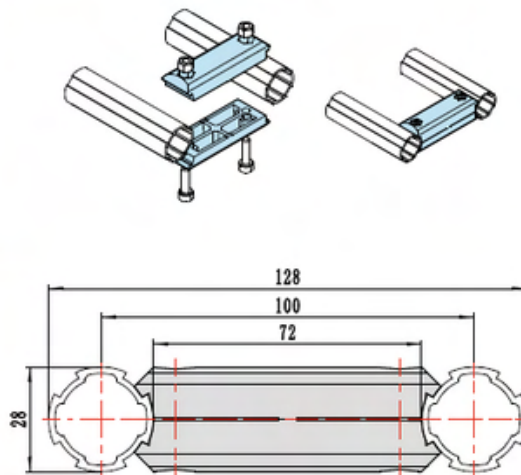


T Connector	
Model	TFA.J28-A07
NW	79 g
PQ	109 set
TW	8.8 Kg
PD	305*235*165 (mm)
Material	
ADC12	
<ul style="list-style-type: none"> Hex socket screw 8.8 M6x20 s=6 Zinc Plated Hex Nut M6 m=7 s=10 Zinc Plated 	

RECOMMENDATIONS

Recomendable para la interconexión de otros perfiles de aluminio y también para la conexión de superficies de pared o piso.
 Suitable for the interconnection of other industrial aluminum profiles and also for the connection of surface of wall and floor.

Parallel Extension Connector



T Connector	
Model	TFA.J28-A08
NW	95 g
PQ	130 set
TW	12.5 Kg
PD	305*235*165 (mm)
Material	
ADC12	
<ul style="list-style-type: none"> Hex socket screw 8.8 M6x20 s=6 Zinc Plated Hex Nut M6 m=7 s=10 Zinc Plated 	

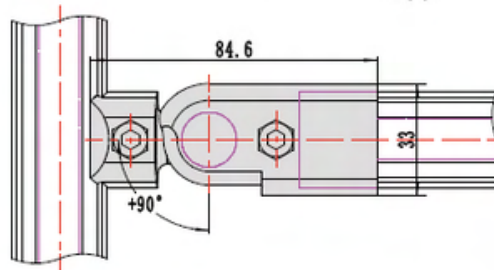
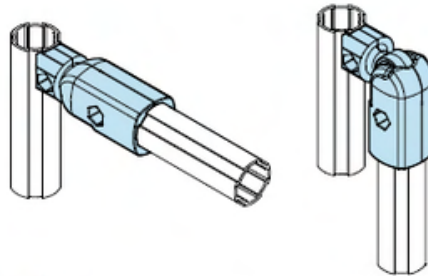
RECOMMENDATIONS

Usado para conexiones extendidas.
 Used for extending fixed connecting.



TFA J28 Connector

Free Connector Outer Type 90°



Free Connector Outer Type 90°

Model TFA.J28-A09

NW 130 g

PQ 88 set

TW 11.64 Kg

PD 305*235*165 (mm)

Material

ADC12

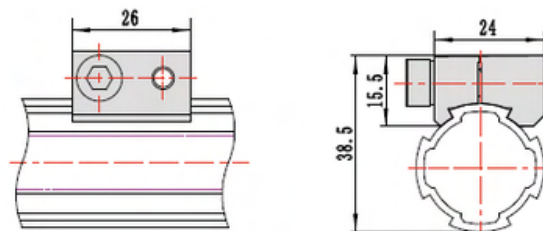
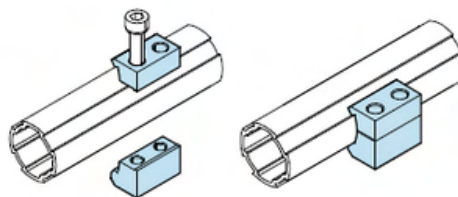
- Hex socket screw 8.8 M6x20 s=6 Zinc Plated
- Hex Nut M6 m=7 s=10 Zinc Plated

RECOMMENDATIONS

Usado para estructuras que se doblan y para ajuste de Ángulos de moción linear.

Used for folding structure design and Angle adjustment of linear motion.

Connector Piece A



Connector Piece A

Model TFA.J28-A10

PD 305*235*165 (mm)

Material

6005T6

- Hex socket screw 8.8 M6x20 s=6 Zinc Plated
- Hex Nut M6 m=7 s=10 Zinc Plated

RECOMMENDATIONS

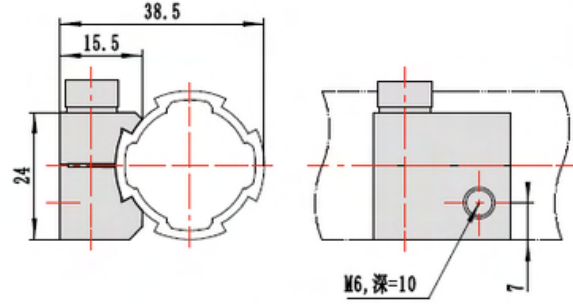
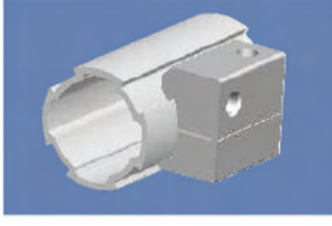
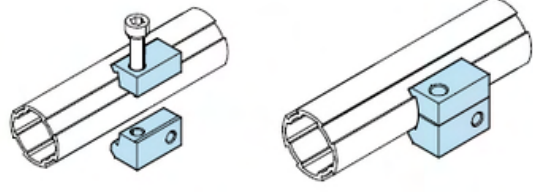
Recomendado en estructuras principales, se requiere instalar una manija y otros accesorios M6.

Main structure require to install grooved pulley and other threaded (M6) accessories.



TFA J28 Connector

Connector Piece B



Connector Piece B

Model TFA.J28-A11

PD 305*235*165 (mm)

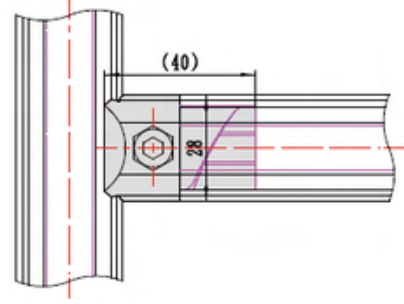
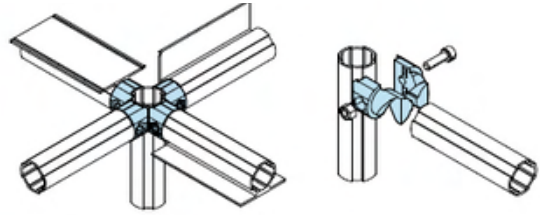
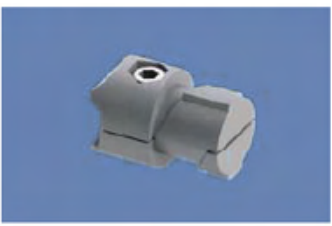
Material 6005T6

- Hex socket screw 8.8 M6x20 s=6 Zinc Plated
- Hex Nut M6 m=7 s=10 Zinc Plated

RECOMMENDATIONS

La estructura principal requiere la instalación de accesorios como la jaladera y tornillos M6.
Main structure requires to install grooved pulley and other threaded (M6) accessories.

Multi Connector Inner Type



Multi Connector Inner Type

Model TFA.J28-B01

PD 305*235*165 (mm)

NW 47 g

PQ 270 set

TW 13 Kg

PD 305*235*165 (mm)

Material ADC12

- Hex socket screw 8.8 M6x20 s=6 Zinc Plated
- Hex Nut M6 m=7 s=10 Zinc Plated

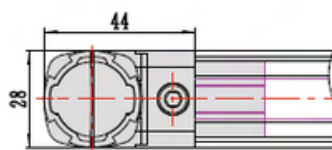
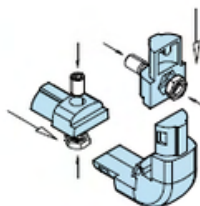
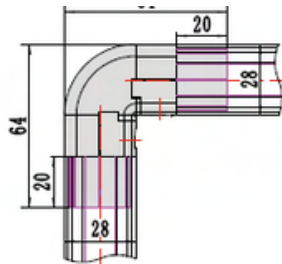
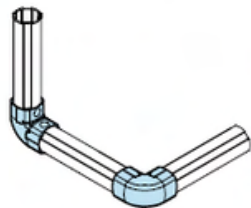
RECOMMENDATIONS

La estructura puede estar conectada a cuatro direcciones en una estructura multi-dimensional, al unirse con TFA.P28-06 para hacer pizarras y protector para vitrina.
The concealed structure can be connected with the four directions of GF into any multi-dimensional structure, matched with TFA.P28-06 to make board & display case.



TFA J28 Connector

Connector Inner Type 90°



Multi Connector Inner Type

Model	TFA.J28-B01
NW	47 g
PQ	270 set
TW	13 Kg
PD	305*235*165 (mm)

Material

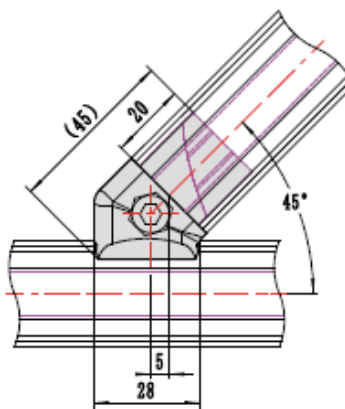
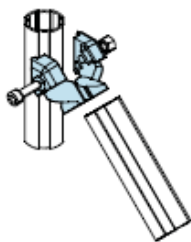
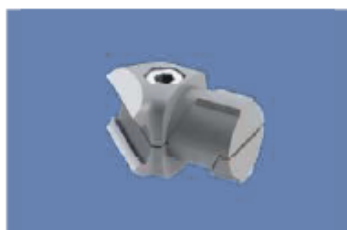
ADC12

- Hex socket screw 8.8 M6x20 s=6 Zinc Plated
- Hex Nut M6 m=7 s=10 Zinc Plated

RECOMMENDATIONS

Para conexiones de 90° entre dos marcos.
90 degree connection between two frames.

Connector Inner Type 45°



Connector Inner Type 45°

Model	TFA.J28-B45
NW	47 g
PQ	270 set
TW	13 Kg
PD	305*235*165 (mm)

Material

ADC12

- Hex socket screw 8.8 M6x20 s=6 Zinc Plated
- Hex Nut M6 m=7 s=10 Zinc Plated

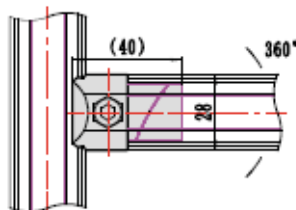
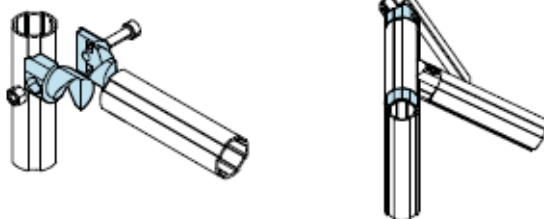
RECOMMENDATIONS

Usado para refuerzo de conexión del ángulos derecho.
Used to reinforce connection of right angles or facades to stiffen frame.



TFA J28 Connector

Multi Connector Inner Rotate Type



接头未压紧之前，线棒可绕自身轴线，任意角度调节。

Multi connector Inner Rotate Type

Model	TFA.J28-B01D
NW	46 g
PQ	270 set
TW	12.7 Kg
PD	305*235*165 (mm)

Material

ADC12

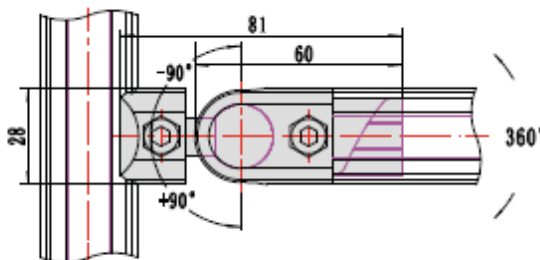
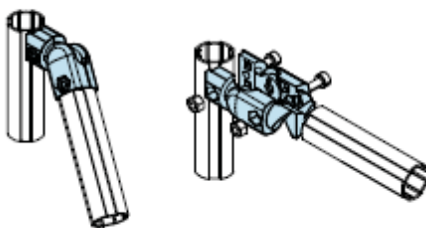
- Hex socket screw 8.8 M6x20 s=6 Zinc Plated
- Hex Nut M6 m=7 s=10 Zinc Plated

RECOMMENDATIONS

Usado para el angulo de conexion requerido para dos planos diferentes.

For de angle connection required for two different planars.

Free Connector Inner Type



180° Free Connector Inner Type

Model	TFA.J28-B180
NW	106 g
PQ	130 set
TW	14 Kg
PD	305*235*165 (mm)

Material

ADC12

- Hex socket screw 8.8 M6x20 s=6 Zinc Plated
- Hex Nut M6 m=7 s=10 Zinc Plated

RECOMMENDATIONS

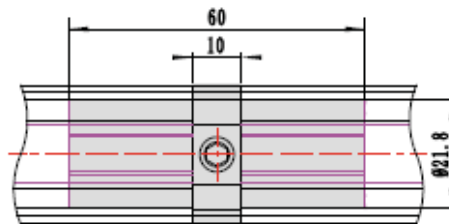
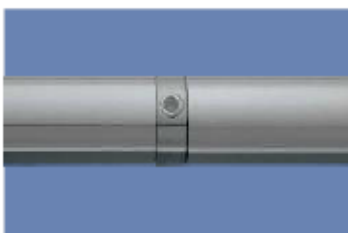
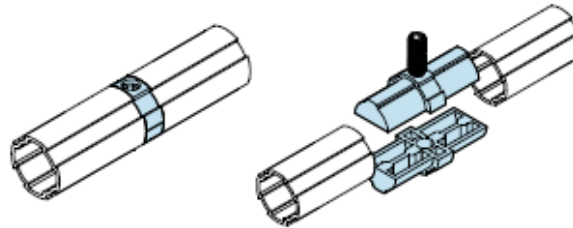
Usado en variables con ángulo de 180° con conexión reforzada, o en cualquier diseño de estructura.

used for 180 degree variable angle reinforcement connection, or any angle structure design.



TFA J28 Connector

Straight Connector



Straight Connector

Model TFA.J28-B02

NW 50 g

PQ 100 set

TW 5.2 Kg

PD 305*235*165 (mm)

Material

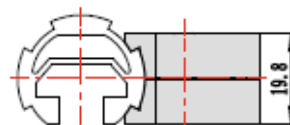
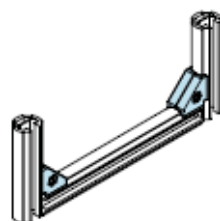
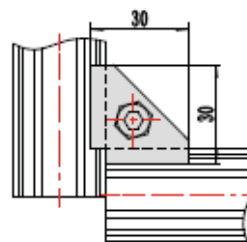
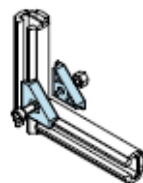
ADC12

- Hex socket Flat screw M8x20 s=4 Zinc Plated

RECOMMENDATIONS

Extensión conectada a GF.
Extension connecting of GF.

90° Fixed Connector



90° Fixed Connector

Model TFA.J28-A13

NW 50 g

PD 305*235*165 (mm)

Material

ADC12

- Hex socket screw 8.8 M6x20 s=6 Zinc Plated
- Hex Nut M6 m=7 s=10 Zinc Plated

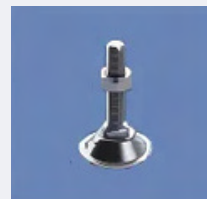
RECOMMENDATIONS

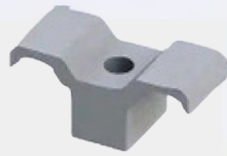
Para conexiones de 90° en esquina con marco de T Slot.
For the connection of 90 degrees corner for T slot frame.



TFA E28 Metallic Auxiliary Parts

TFA E28





TFA E28 Metallic Auxiliary Parts

Plate Positioner

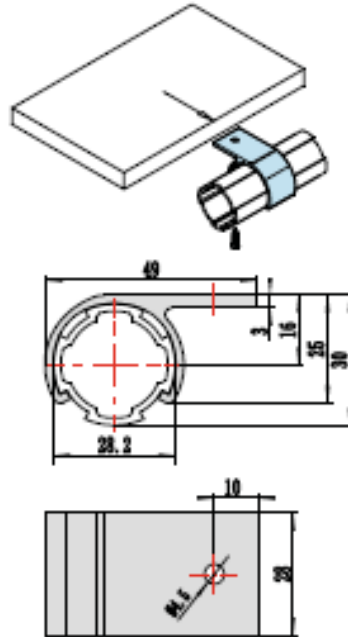
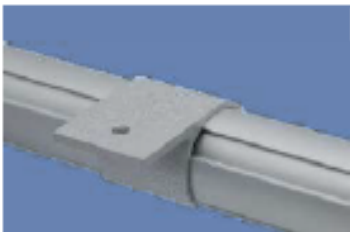
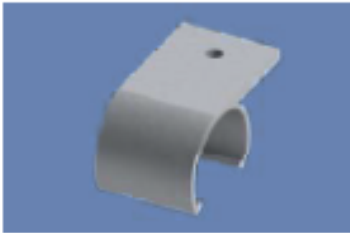


Plate Positioner

Model	TFA.E28-01
NW	15.5 g
PQ	200 set
TW	3.4 Kg
PD	305*235*165 (mm)

Material

6005T6

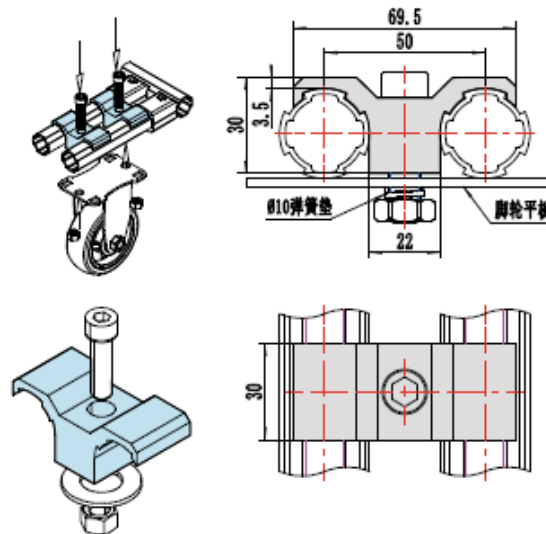
- Cross Counter sunk Screw ST= 2.9 dk: 5.5 m=3.2

RECOMMENDATIONS

Usado para acondicionar el panel de una mesa.

Used for fixing table panel.

Caster Supportor



Caster Supportor

Model	TFA.E28-02
NW	80.5 g
PQ	96 set
TW	8 Kg
PD	305*235*165 (mm)

Material

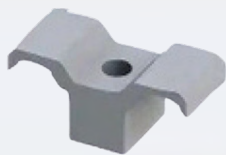
ADC12

- Hex socket screw 8.8 M10x40 s=8.2 Zinc Plated
- Hex Nut M10 m=8 s=15.6 Zinc Plated
- Spring Washer OD=14 D=10 Thickness 2

RECOMMENDATIONS

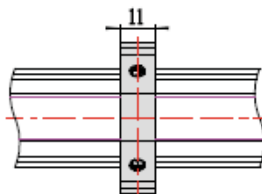
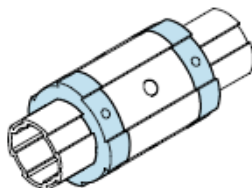
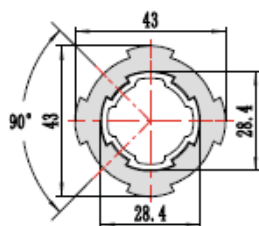
Para conectar la llanta con el frame.

Connection between the free caster and frame.



TFA E28 Metallic Auxiliary

Slider Located Ring



Slider Located ring

Model	TFA.E28-03
NW	19.7 g
PQ	556 set
TW	11.2 Kg
PD	305*235*165 (mm)

Material

6005T6

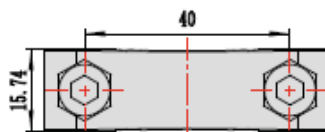
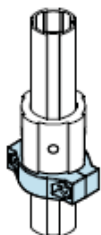
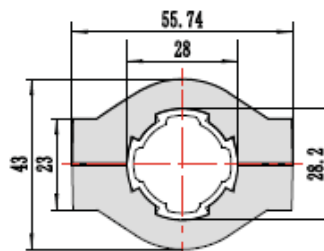
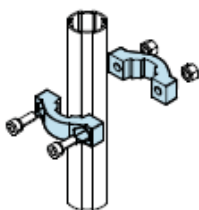
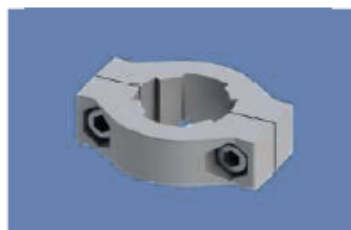
- Hex socket Flat screw 8.8 Full thread M5x6 s=2.5 Zinc Plated

RECOMMENDATIONS

Usado para deslizar y asegurar la dirección horizontalmente.

Used for slide set location on horizontal direction.

Locate Support



Locate Support

Model	TFA.E28-04
NW	55 g
PQ	225 set
TW	12.7 Kg
PD	305*235*165 (mm)

Material

ADC12

- Hex socket screw 8.8 M6x20 e=5 Zinc Plated
- Hex Nut M6 m=7 s=10 (Zinc Plated)

RECOMMENDATIONS

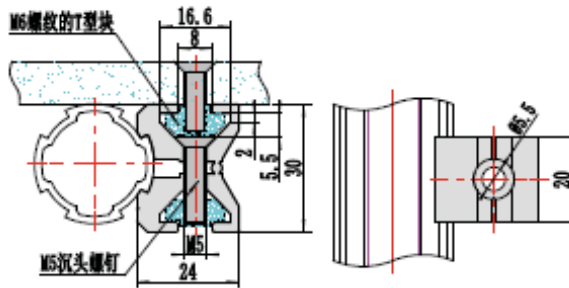
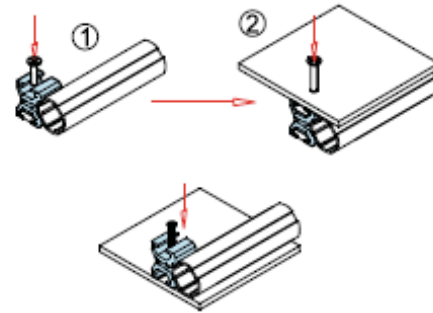
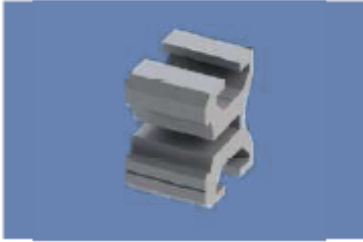
Usado para deslizar y asegurar la dirección verticalmente.

Used for slide set location on vertical.



RTA E28 Metallic Auxiliary Parts

Elastic Appendage



Elastic Appendage

Model TFA.E28-05

PD 305*235*165 (mm)

Material

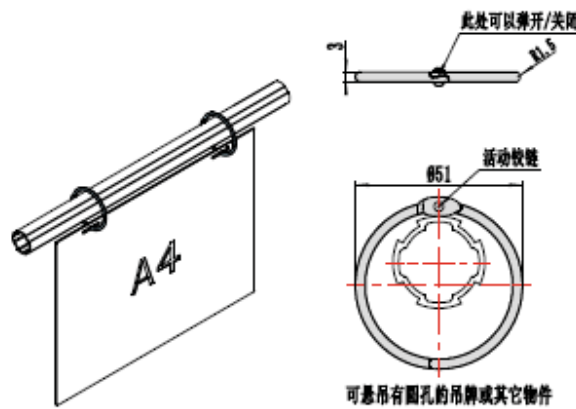
6005T6

RECOMMENDATIONS

Usado para ensamblar el frame o instalar otros accesorios en cualquier posición.
No compatible con TFA.E28-SMS05/SM06.

Used for fixing frame board or installing other accessories at any position. Note Matched with TFA.E28-SMS05 / SM06.

Hangtag Buckle



Hangtag Buckle

Model TFA.E28-06

NW 9.2 g

PQ 1000 set

TW 9.5 Kg

PD 305*235*165 (mm)

Material

CS

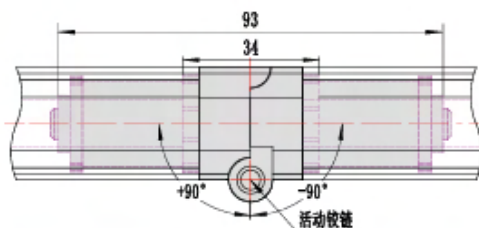
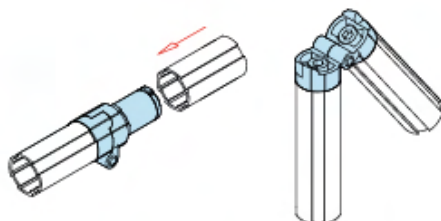
RECOMMENDATIONS

Usado para colgar la tarjeta de operación para su lectura.

Hang operation card for reading.

TFA E28 Metallic Auxiliary Parts

Hinger Joint



Hinger Joint

Model	TFA.E28-07
NW	122 g
PQ	80 set
TW	10.1 Kg
PD	305*235*165 (mm)

Material

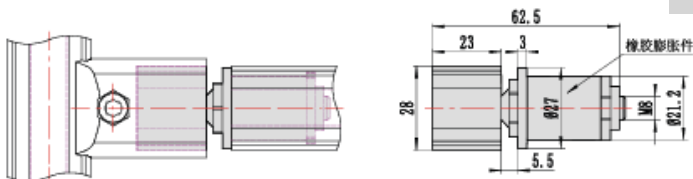
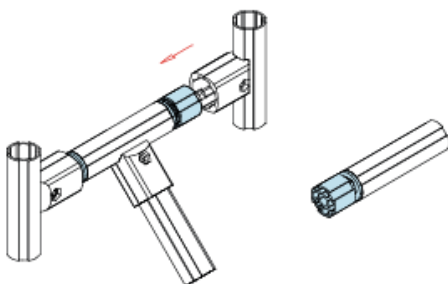
Hex socket screw M8X40
Zinc Plated

RECOMMENDATIONS

Recomendado para aplicaciones en mesas de trabajo removibles, también se puede usar para el diseño de productos con estructura plegable.

Aplication of removable workbench, can also be used for product design of folding structure.

Rotating Joint



Rotating Joint

Model	TFA.E28-08
NW	81 g
PQ	150 set
TW	12.5 Kg
PD	305*235*165 (mm)

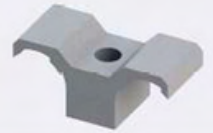
Material

6063T6+ rubber+ CS +
Bearing

RECOMMENDATIONS

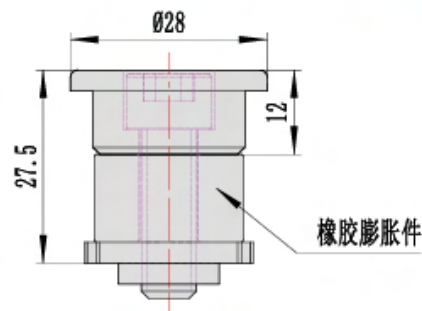
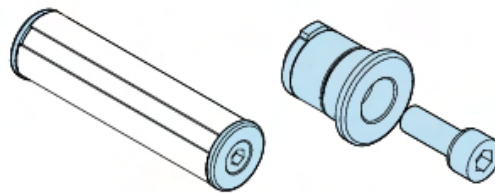
Compatible con TFA.J28-A01, dos sets de una serie pueden formar una estructura similar al roller.

Matched with TFA.J28-A01, two sets of for one serie, can form a structure similar to roller.



TFA E28 Metallic Auxiliary Parts

Insert



Insert

Model TFA.E28-09

NW 55 g

PQ 50 set

TW 2.8 Kg

PD 305*235*165 (mm)

Material

ADC12-CS

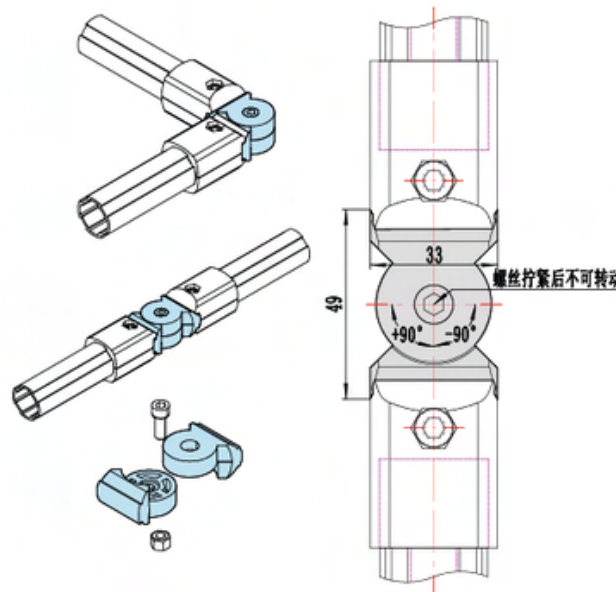
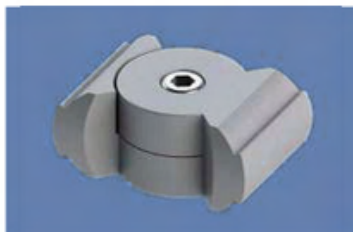
Hex socket screw
M8X22 s=6 Zinc Plated

RECOMMENDATIONS

Previene el desgaste de la superficie, también puede usarse la Cap de 28 GF.

Prevent end surface wear, also used-cap for 28 GF.

Angle Joint



Angle Joint

Model TFA.E28-10

NW 69 g

PQ 228 set

TW 16 Kg

PD 305*235*165 (mm)

Material

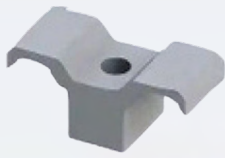
ADC12

- Hex socket screw
M6x20 e=5
- Hex Nut M6 m=7
s=6010 Zinc Plated

RECOMMENDATIONS

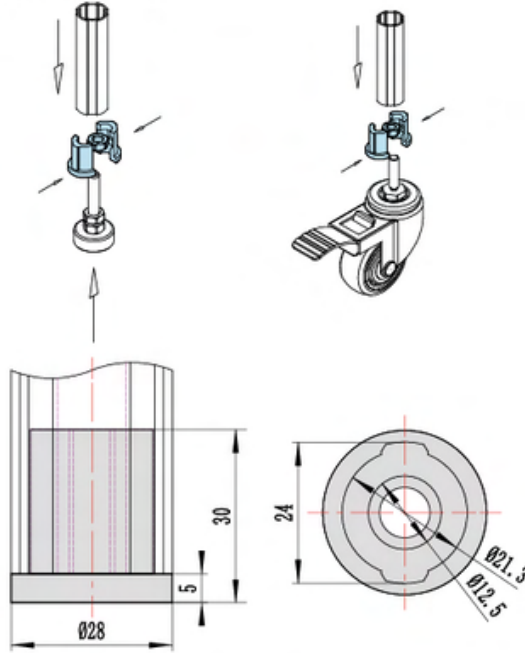
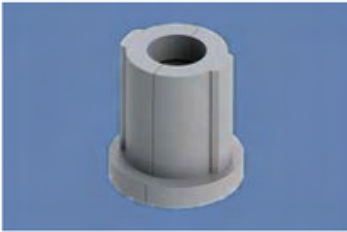
Usado para el diseño de productos en cualquier ángulo, múltiples combinaciones pueden ser diseñadas con estructura geométrica específica.

For product design at any Angle, multiple combination can be designed into a specific geometric structure.



TFA E28 Metallic Auxiliary Parts

Aluminum Allow Foot Connector



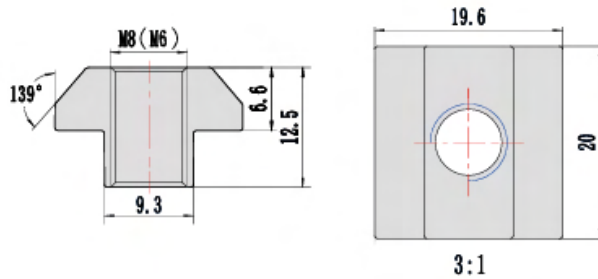
Alluminum Alloy Foot connector	
Model	TFA.E28-17
NW	30 g
PQ	250 set
TW	7.8 Kg
PD	305*235* 165 (mm)
Material	ADC12

RECOMMENDATIONS

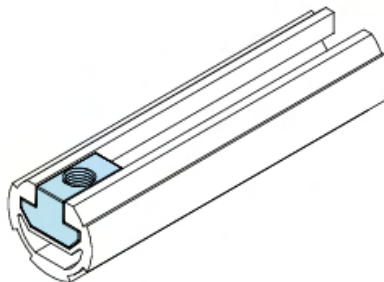
Usado para propósitos antiestáticos, compatibles TFA E28-3010C, también para ensamble de Tornillo para caster más chico que 4".

For Anti-estatic purpose of matched with TFA.E28-3810C, also assembly of screw caster below 4".

“T” Block



T Block	
Model	TFA.E28-LM06
NW	18.3 g
Material	CS Zinc Plated



T Block	
Model	TFA.E28-LM08
NW	16.85 g
Material	CS Zinc Plated

RECOMMENDATIONS

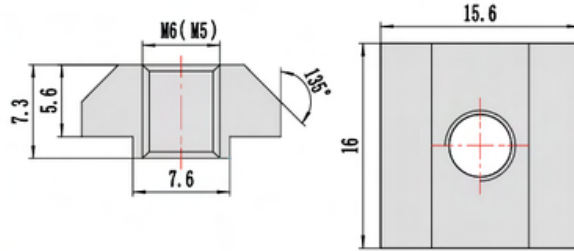
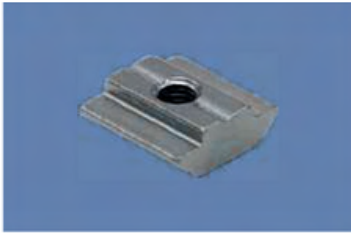
Compatibles con T Slot frame de la series 28 y 43.

Matched with T slot frame (28 and 43 series).



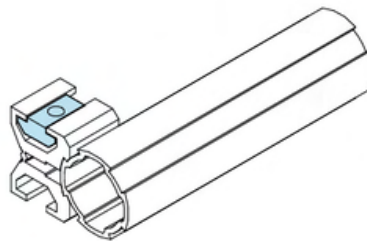
TFA E28 Metallic Auxiliary Parts

“T” Block



T Block

Model	TFA.E28-SM05
NW	7.47 g
Material	CS Zinc Plated



T Block

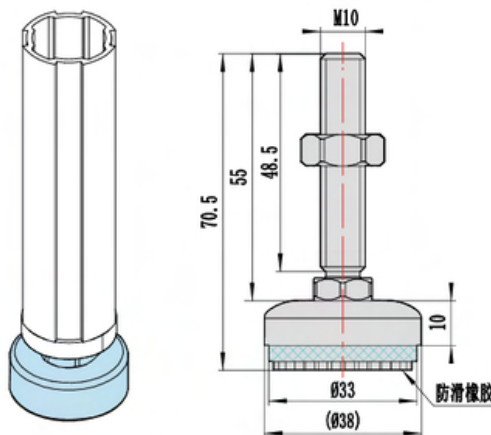
Model	TFA.E28-SM056
NW	6.98 g
Material	CS Zinc Plated

RECOMMENDATIONS

Compatibles con TFA.E28-05.

Matched with TFA.E28-05.

Foot Base (Adjustable)

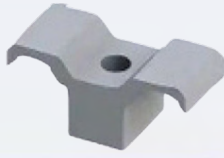


Alluminum Alloy Foot connector

Model	TFA.E28-3810A
NW	85 g
PQ	200 set
TW	17.3 Kg
PD	305*235*165 (mm)
Material	CS+Ru

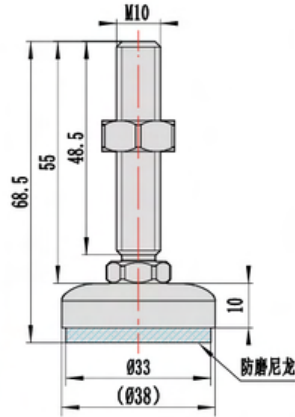
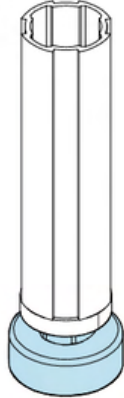
RECOMMENDATIONS

Recomendado para mesas de trabajo y otros productos de altura ajustable.
Suitable for worktable and other supported products height adjustment Anti-skidding.



TFA E28 Metallic Auxiliary Parts

Foot Base (Adjustable)



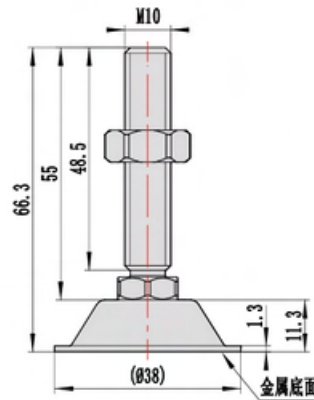
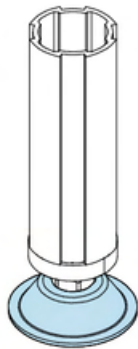
Foot Based (Adjustable)

Model	TFA.E28-3810B
NW	59 g
PQ	200 set
TW	12 Kg
PD	305*235* 165 (mm)
Material	CS+Nylon

RECOMMENDATIONS

Recomendado para mesas de trabajo y otros productos de altura ajustable.
Suitable for worktable and other supported products height adjustment Anti-skidding.

Foot Base (Adjustable)

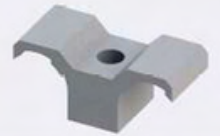


Foot Based (Adjustable)

Model	TFA.E28-3810C
NW	70 g
PQ	200 set
TW	14.3 Kg
PD	305*235* 165 (mm)
Material	CS

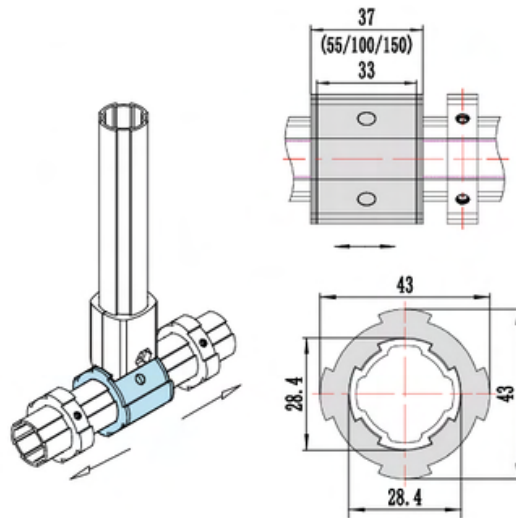
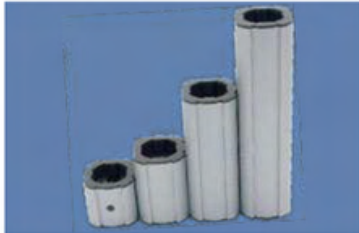
RECOMMENDATIONS

Recomendado para mesas de trabajo y otros productos de altura ajustable.
Suitable for worktable and other supported products height adjustment Anti-skidding.



TFA E28 Metallic Auxiliary Parts

Slider Fixed Type



Foot Based (Adjustable)

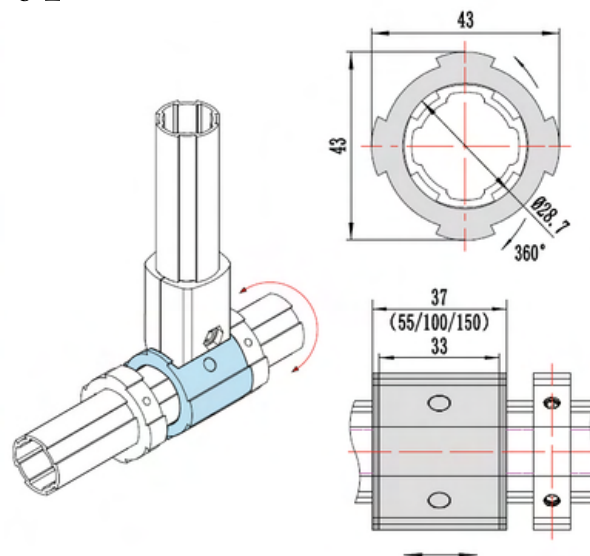
Model	TFA.E28-L37D -L55D / -L100D -L150D
NW	32/44.5/78/113 g
PQ	140/90/56/30 pc
TW	4.8/4.3/4.6/3.7 Kg
PD	305*235*165 (mm)
Material	6005T6+ABS

RECOMMENDATIONS

Recomendado para mesas de trabajo y otros productos de altura ajustable.

Matched with 28 frame, can achieve axial horizontal straight line sliding.

Slider Rotating Type



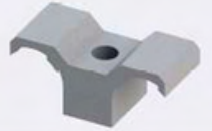
Slider Rotating Type

Model	TFA.E28-L37Z -L55Z / -L100Z -L150Z
NW	32/44.5/78/113 g
PQ	140/90/56/30 pc
TW	4.8/4.3/4.6/3.7 Kg
PD	305*235*165 (mm)
Material	6005T6+ABS

RECOMMENDATIONS

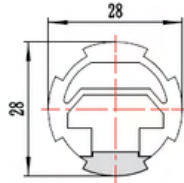
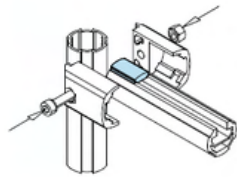
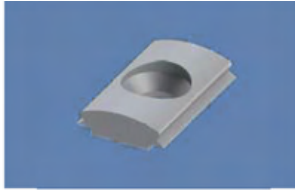
Compatible con frame de 28, puede alcanzar la línea recta horizontal y rotar sobre el eje de cualquier ángulo.

Matched with 28 frame, can achieve axial horizontal straight line sliding, also rotate around the axis at any angle.



TFA E28 Metallic Auxiliary Parts

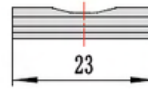
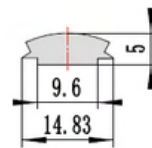
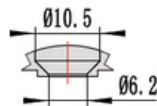
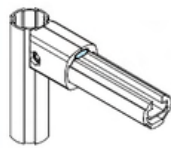
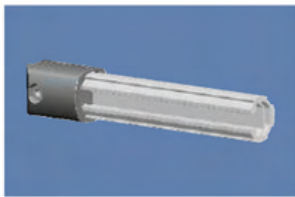
“T” Slot Frame Block



“T” Slot frame block

Model

TFA.E28-11

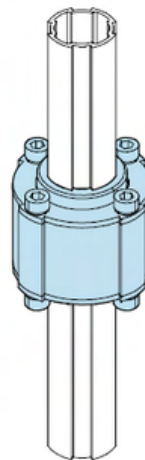
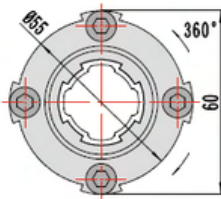


RECOMMENDATIONS

Soporte final para el T Slot.

End supporter of “T” slot frame, also used as shift.

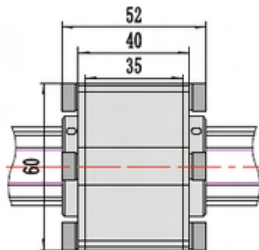
Rotor



Rotor

Model

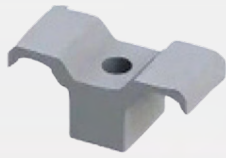
TFA.E28-12



RECOMMENDATIONS

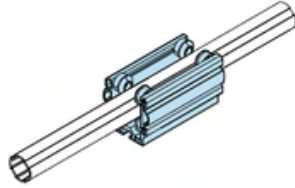
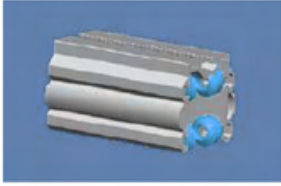
Usado como pedestal, puede diseñarse para un aparato revolvente.

Used as bearing pedestal, can design the revolving device.



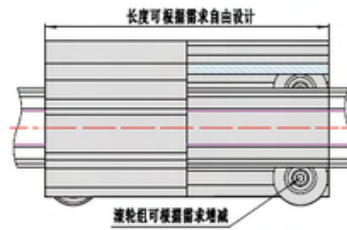
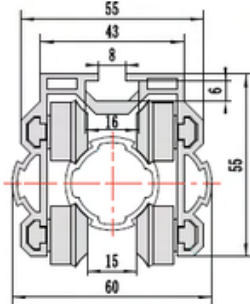
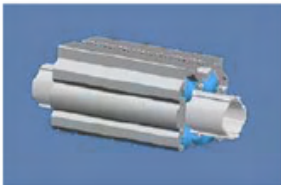
TFA E28 Metallic Auxiliary Parts

Linear Motion Module



Linear motion module

Model TFA.E28-13



RECOMMENDATIONS

Usado para movimientos lineales en frame 28.

Used for linear motion for 28 frame.

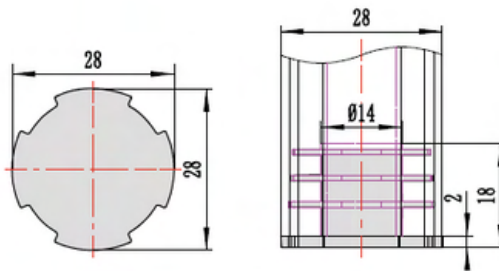
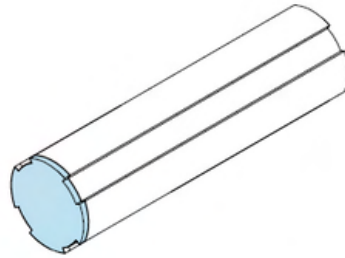
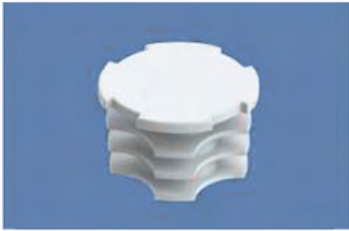
TFAP 28





TFA P28 Non-Metallic Auxiliary Parts

Insert



Insert

Model	TFA.P28-01
NW	2.08 g
PQ	550 pcs
TW	1.43 Kg
PD	305*235*165 (mm)

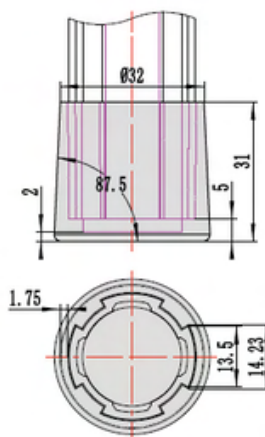
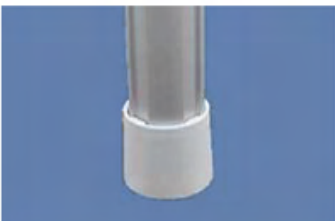
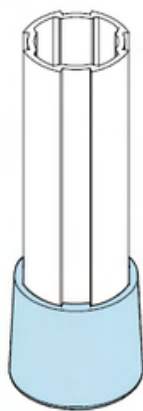
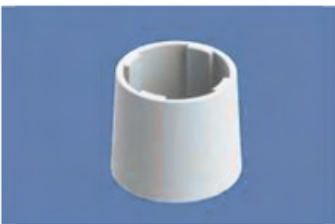
Material

PP

RECOMMENDATIONS

Previene el desgaste de la superficie, también se usa como end-cap para 28 GF.
Prevent end surface wear, also used as end-cap for 28 GF.

Foot Base



Foot Base

Model	TFA.P28-02
NW	8.4 g
PQ	180 pcs
TW	1.8 Kg
PD	305*235*165 (mm)

Material

PP

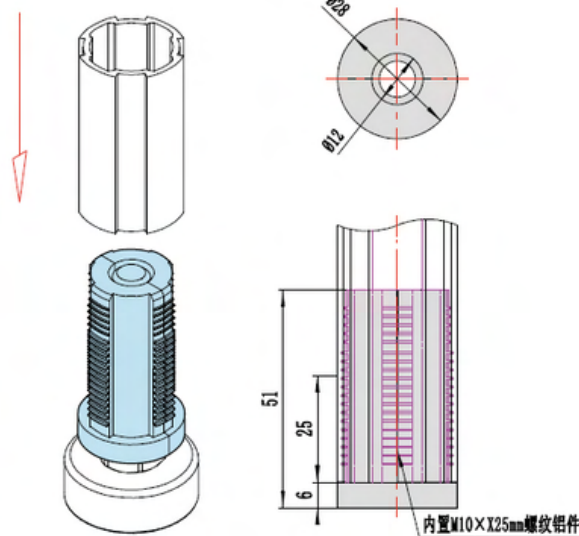
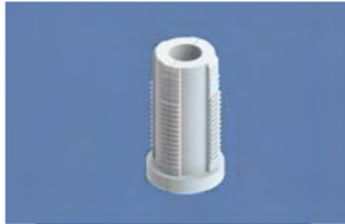
RECOMMENDATIONS

Recomendado para instalar series de 28 frame.
Suitable for installing 28 series frame.



TFA P28 Non-Metallic Auxiliary Parts

Foot Connector



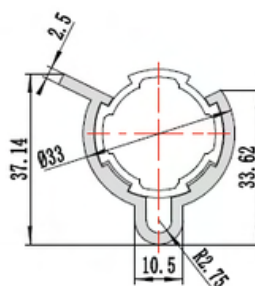
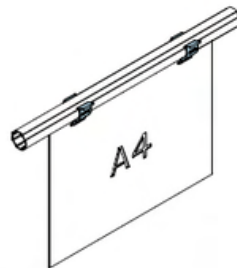
Foot Base	
Model	TFA.P28-2810
NW	18.2 g
PQ	200 pcs
TW	4 Kg
PD	305*235*165 (mm)
Material	
PP	

RECOMMENDATIONS

Recomendado para instalar series de 28 GF con base (no para llanta con tornillo).

Suitable for installing 28 GF foot base (not for screw caster).

Hangtag Clip



Hangtag clip	
Model	TFA.P28-03
NW	3.32 g
PQ	420 pcs
TW	1.68 Kg
PD	305*235*165 (mm)
Material	
PP	

RECOMMENDATIONS

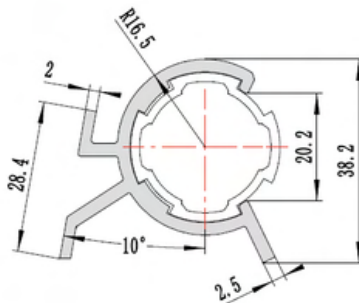
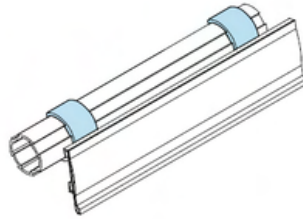
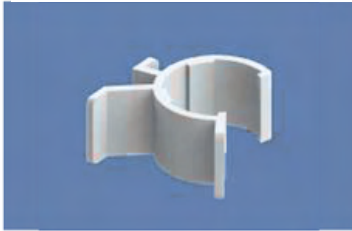
Para colgar los archivos A4.

Hang A4 files cover.



TFA P28 Non-Metallic Auxiliary Parts

Signboard Clip



Signboard Clip

Model	TFA.P28-04
NW	4.3 g
PQ	330 pcs
TW	1.65 Kg
PD	305*235*165 (mm)

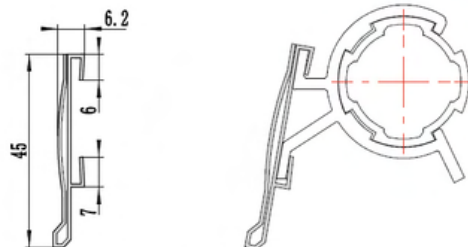
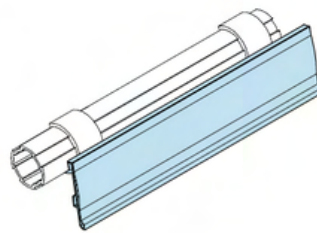
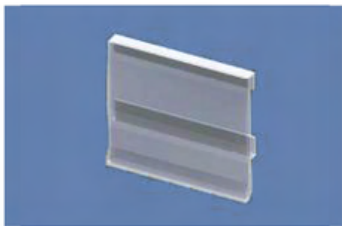
Material

PP

RECOMMENDATIONS

Para localizar pizarrones de información en el roller (Compatible con TFA.P28-08).
 Locate signboard of flow roller rack (Note: Matched with TFA.P28-08).

“T” Slot Signboard



“T” Slot Signboard

Model	TFA.P28-08
NW	102 g/m
PQ	50 pcs
L	4 m
PD	305*235*165 (mm)

Material

PVC

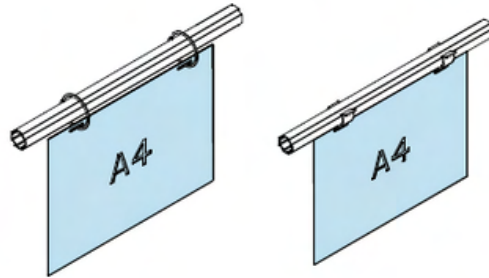
RECOMMENDATIONS

Para localizar pizarrones de información en el roller (Compatible con TFA.P28-04).
 Locate signboard of flow roller rack (Note: Matched with TFA.P28-04).

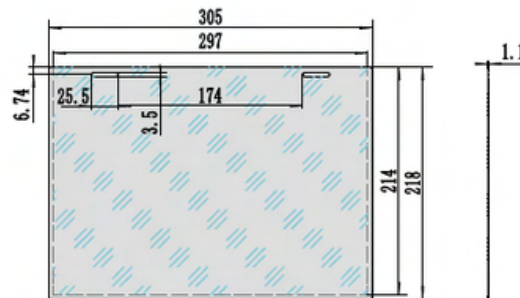
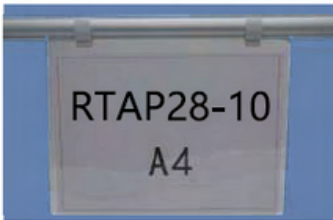


TFA P28 Non-Metallic Auxiliary Parts

A4 Hangtag Clip



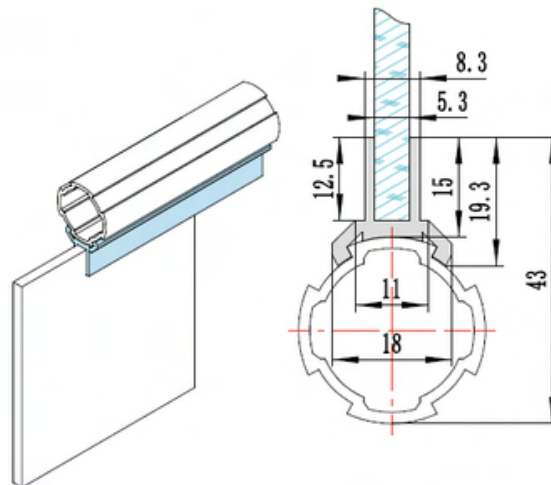
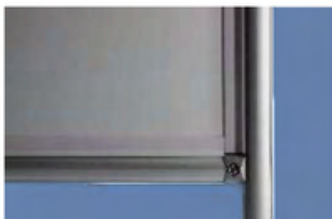
A4 Hangtag Cover	
Model	TFA.P28-10
NW	69 g
Material	
PVC	



RECOMMENDATIONS

Para exhibir tarjetas de operación u otros archivos (Compatible con TFA.P28-03 o TFA.E-06).
 Display operation card and other files (Note: Matched with TFA.P28-03 or TFA.E-06).

Panel Holder



5.3mm Panel Holder	
Model	TFA.P28-06
NW	143 g/m
PQ	100 pcs
L	4 m
Material	
PVC	

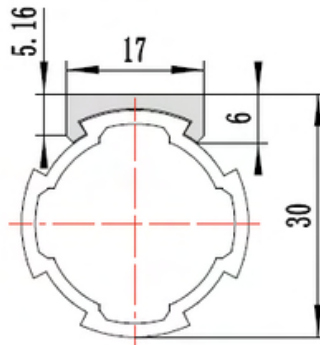
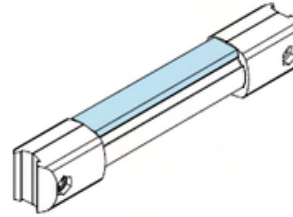
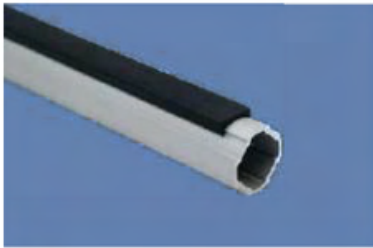
RECOMMENDATIONS

Usado para ensamblar o separar.
 Used for plate assembly or separating purpose.



TFA P28 Non-Metallic Auxiliary Parts

Frame Strip



Frame Strip

Model TFA.P28-07B/W

NW 80 g/m

PQ 100 pcs

L 4 m

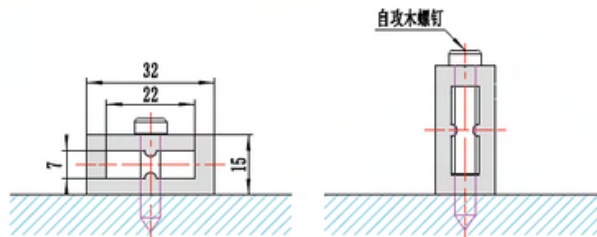
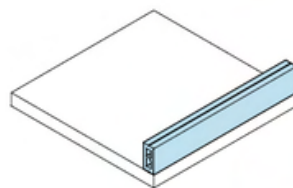
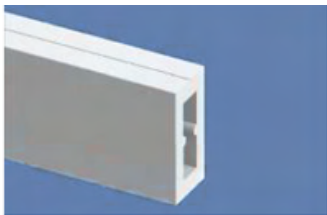
Material

PVC

RECOMMENDATIONS

Usado como protección de superficie y decoración del frame, o como soporte auxiliar.
Used for surface protection and decoration of frame, or as auxiliary support pad.

Fender



Frame Strip

Model TFA.P28-13

NW 600 g/m

PQ 10 pcs

L 4 m

Material

PVC

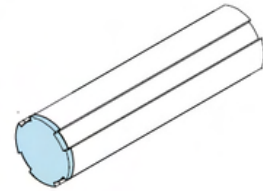
RECOMMENDATIONS

Tope para placas, material, o áreas de insolación.
Plate or material layer boundary block, or area isolation.



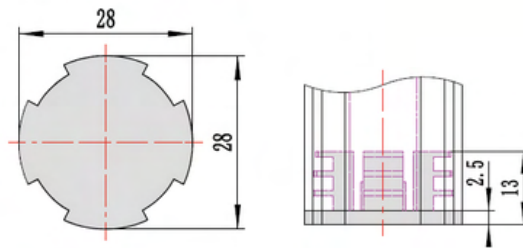
TFA P28 Non-Metallic Auxiliary Parts

Loaded Frame Insert



Loaded frame insert

Model TFA.P28-11

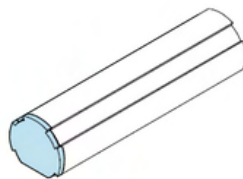


RECOMMENDATIONS

Para protección y decoración del frame de 28.

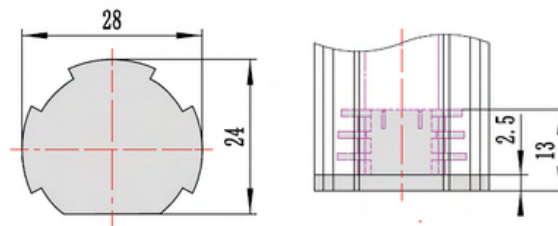
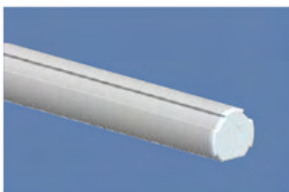
Protection and decoration of 28 loaded frame end.

T Slot Frame Insert



Loaded frame insert

Model TFA.P28-12



RECOMMENDATIONS

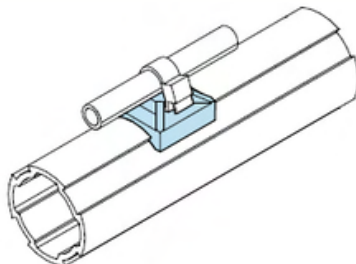
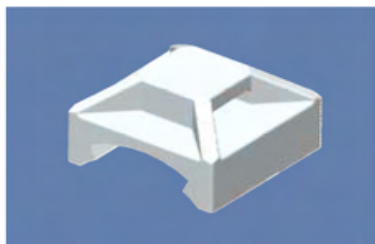
Para protección y decoración del frame de 28.

Protection and decoration of 28 "T" slot frame end.



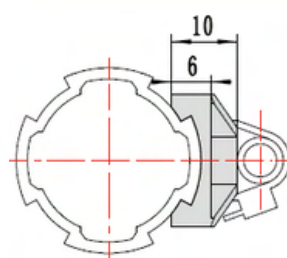
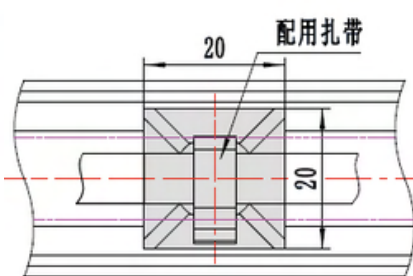
TFA P28 Non-Metallic Auxiliary Parts

Wire Clip



Loaded frame insert

Model TFA.P28-14

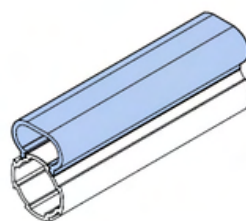


RECOMMENDATIONS

Tapa para fijar los accesorios con un punto múltiple.

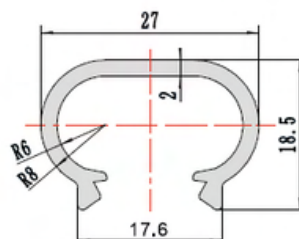
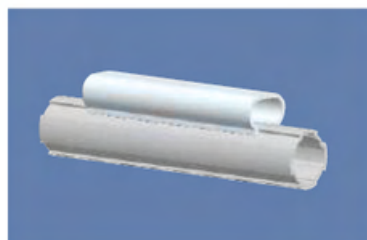
Power rope and air hose point fixing accessories clasp typedesign, with multi-point layout, fixed with tie

Hidden Wire Slot



Hidden wire slot

Model TFA.P28-15



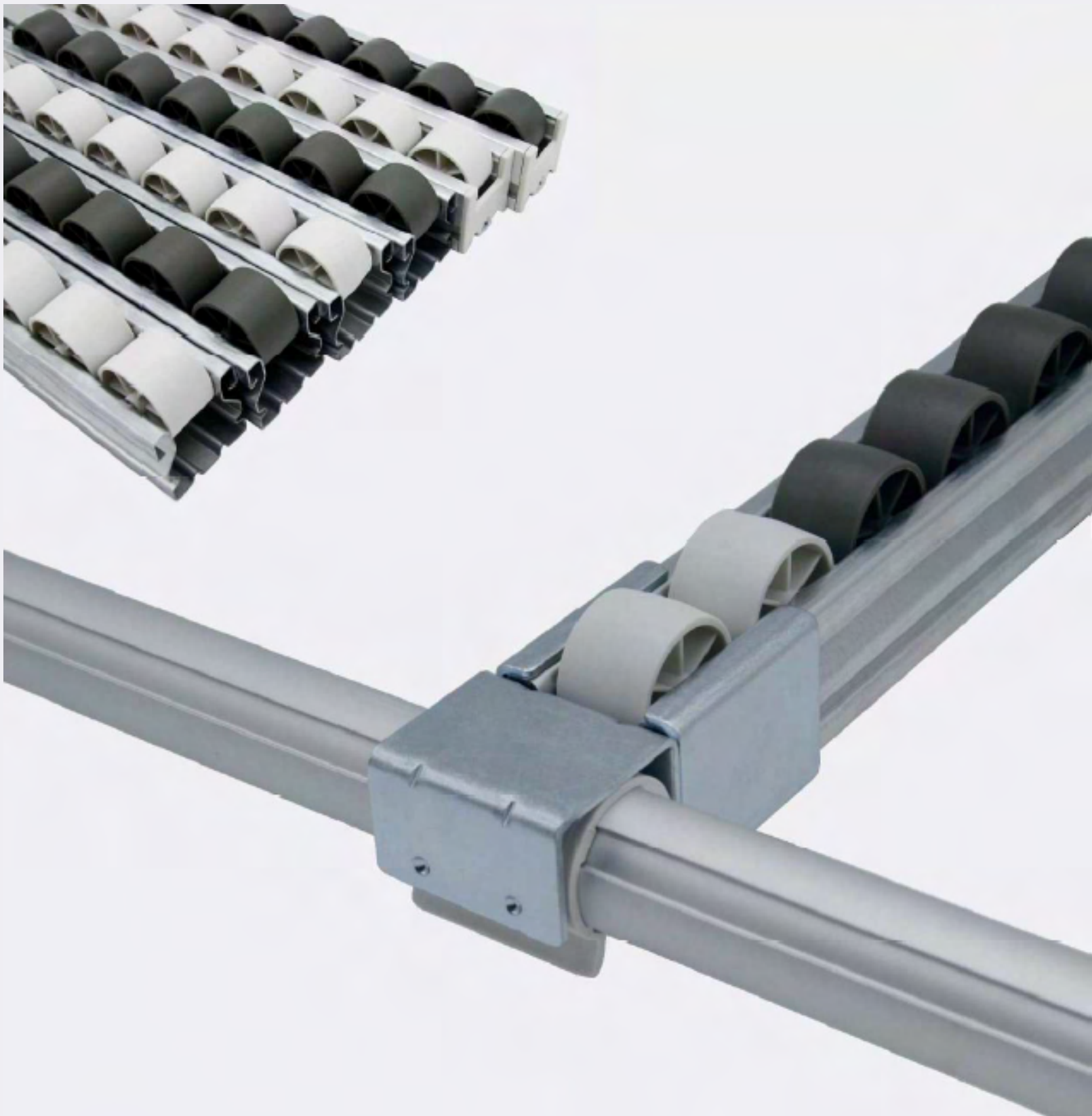
RECOMMENDATIONS

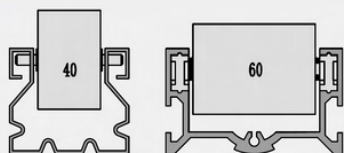
Usados para no dejar los cables o cuerdas visibles y no afectar el diseño.

Power rope encapsule accessories, clasp type design.

TFA.L Flow Roller Track

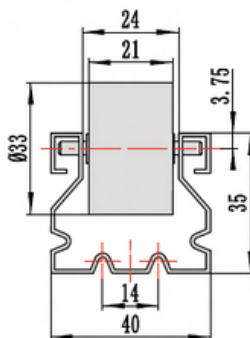
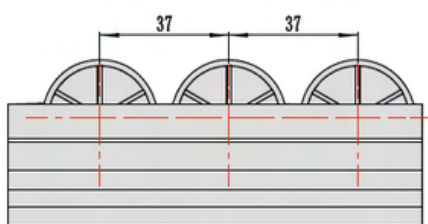
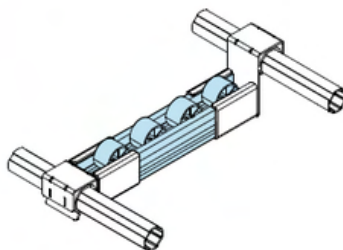
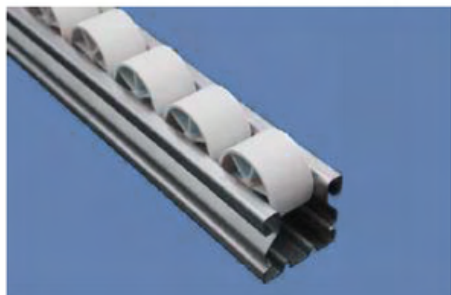
TFA L





TFA.L Flow Roller Track

CS Flow Roller Track (Curved)



Flow Roller Track (CS Zinc)

Model TFA.L-G4033 PW

NW 1180 g/m

PQ 4 pcs/bundle

L 4 m

Material

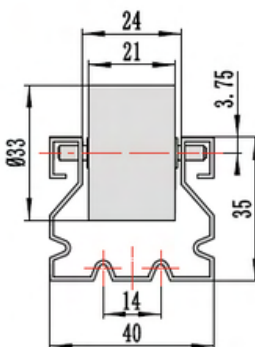
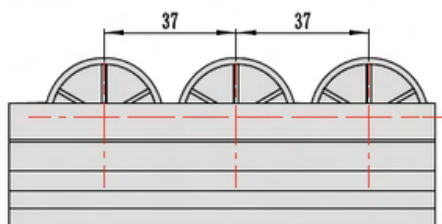
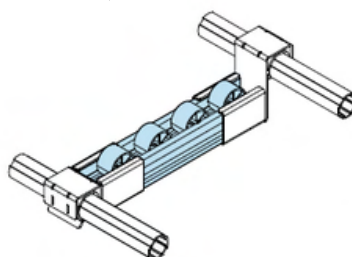
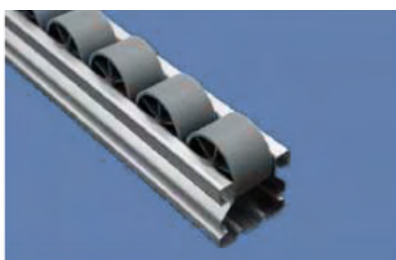
Roller wheels-PP Track
Frame: CS Zinc

RECOMMENDATIONS

Roller basico, para menos ruido y una transmisión de productos más suave.

Basic flow roller, rolling noise and smooth transmission of products.

Flow Roller Track (CS Zinc)



Flow Roller Track (CS Zinc)

Model TFA.L-G4033 PB

NW 1180 g/m

PQ 4 pcs/bundle

L 4 m

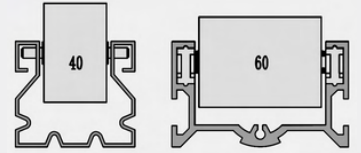
Material

Roller wheels-PP Track
Frame: CS Zinc

RECOMMENDATIONS

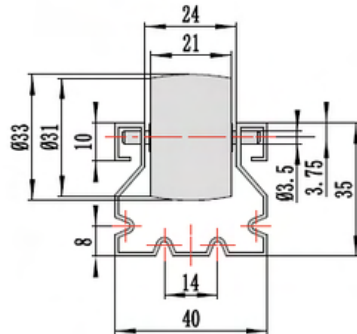
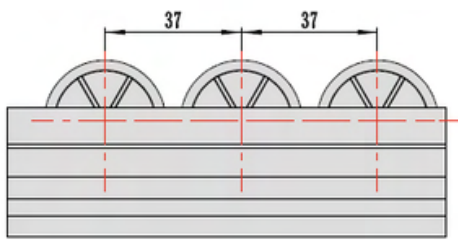
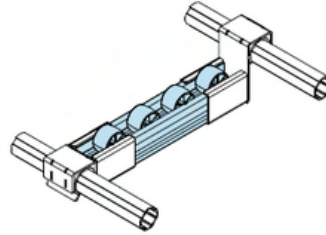
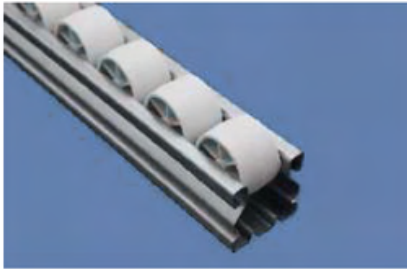
Roller basico, para menos ruido y una transmisión de productos más suave.

Basic flow roller, rolling noise and smooth transmission of products.



TFA.L Flow Roller Track

CS Flow Roller Track (Curved)



CS Flow Roller Track (Curved)

Model TFA.L-G4033CW

NW 1175 g/m

PQ 4 pcs/bundle

L 4 m

Material

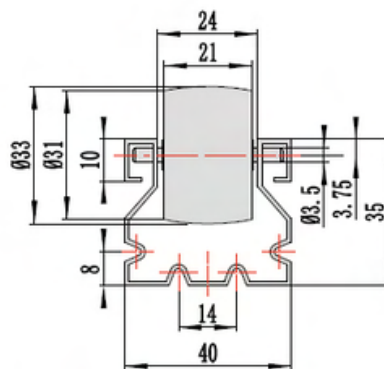
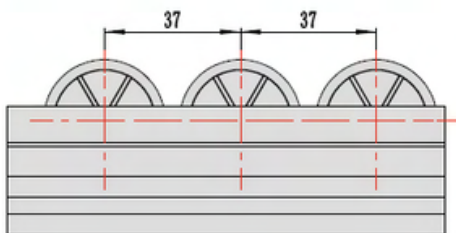
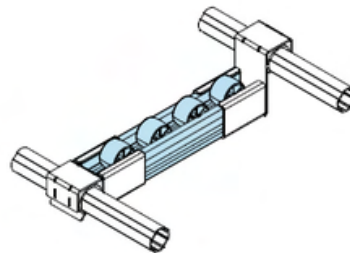
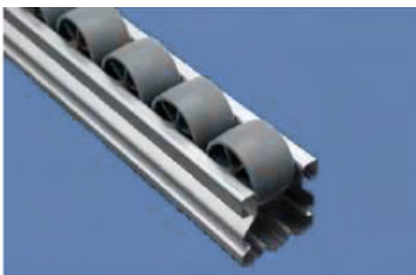
Roller wheels-PP Track
Frame: CS Zinc

RECOMMENDATIONS

Roller básico, para menos ruido y una transmisión de productos más suave.

Basic flow roller, rolling noise and smooth transmission of products.

CS Flow Roller Track (Curved)



CS Flow Roller Track (Curved)

Model TFA.L-G4033CB

NW 1175 g/m

PQ 4 pcs/bundle

L 4 m

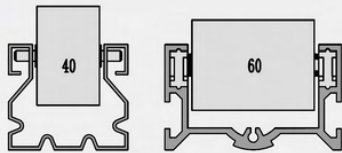
Material

Roller wheels-PP Track
Frame: CS Zinc

RECOMMENDATIONS

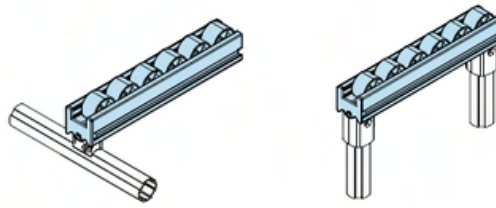
Roller básico, para menos ruido y una transmisión de productos más suave.

Basic flow roller, rolling noise and smooth transmission of products.



TFA.L Flow Roller Track

Aluminum Flow Roller Track (Flat)



Aluminum Flow Roller Track (flat)

Model TFA.L-A4033PW

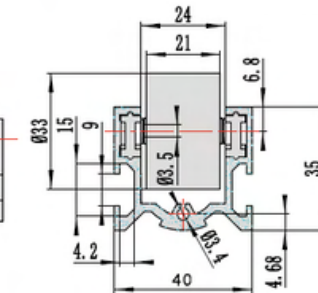
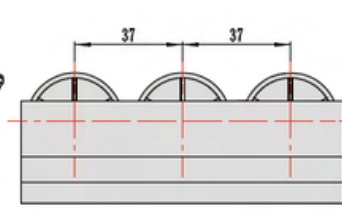
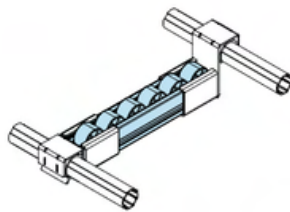
NW 1140 g/m

PQ 4 pcs/bundle

L 4 m

Material

6005T6+PP

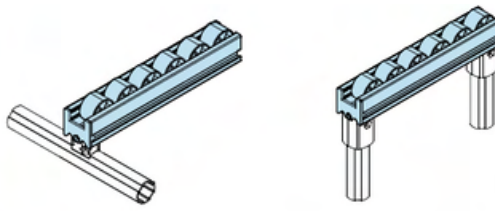


RECOMMENDATIONS

Roller superior, con movimiento silencioso. Compatible para gran volumen. Peso ligero y transmisión suave de productos.

Upper flow roller, high- rigidity fram, silent rolling, suitable for large volume, Non-heavy weight and smooth transmission of products.

Aluminum Flow Roller Track (Flat)



Aluminum Flow Roller Track (flat)

Model TFA.L-A4033PB

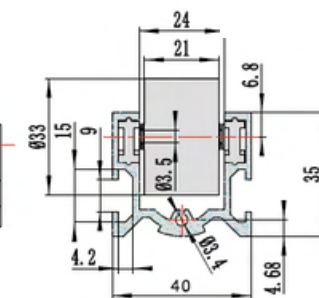
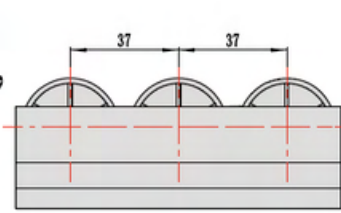
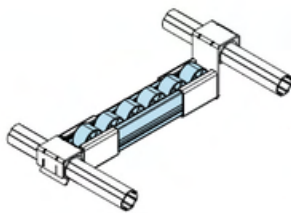
NW 1140 g/m

PQ 4 pcs/bundle

L 4 m

Material

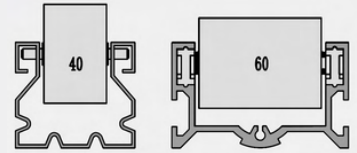
6005T6+PP



RECOMMENDATIONS

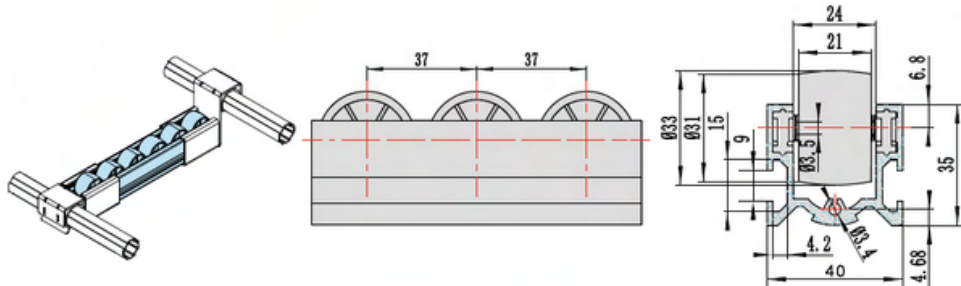
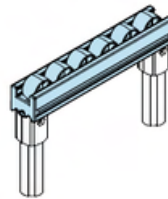
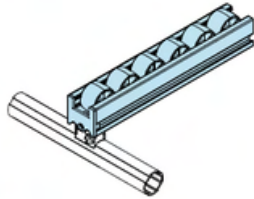
Roller superior, con movimiento silencioso. Compatible para gran volumen. Peso ligero y transmisión suave de productos.

Upper flow roller, high- rigidity fram, silent rolling, suitable for large volume, Non-heavy weight and smooth transmission of products.



TFA.L Flow Roller Track

Aluminum Flow Roller Track (Curved)



Aluminum Flow Roller Track (curved)

Model TFA.L-A4033CW

NW 1135 g/m

PQ 4 pcs/bundle

L 4 m

Material

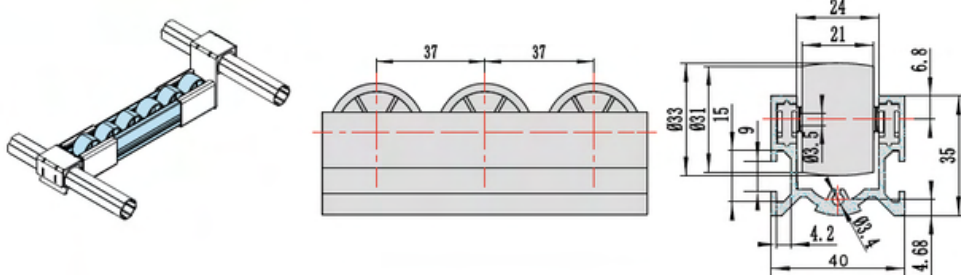
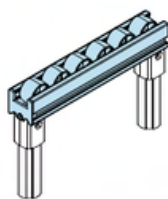
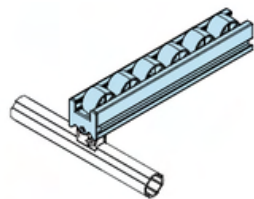
6005T6+PP

RECOMMENDATIONS

Roller superior, con movimiento silencioso. Compatible para gran volumen. Peso ligero y transmisión suave de productos.

Upper flow roller, high-rigidity fram, silent rolling, suitable for large volume, Non-heavy weight and smooth transmission of products.

Aluminum Flow Roller Track (Curved)



Aluminum Flow Roller Track (curved)

Model TFA.L-A4033CB

NW 1135 g/m

PQ 4 pcs/bundle

L 4 m

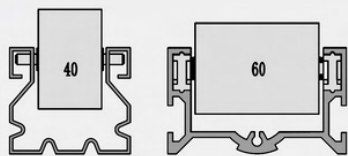
Material

6005T6+PP

RECOMMENDATIONS

Roller superior, con movimiento silencioso. Recomendado para gran volumen y peso ligero. De transmisión suave de productos.

Upper flow roller, high-rigidity fram, silent rolling, suitable for large volume, Non-heavy weight and smooth transmission of products.



TFA.L Flow Roller Track

Flow Roller Track (Aluminum Alloy)

Flow Roller Track (Aluminum Alloy)

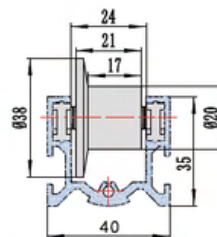
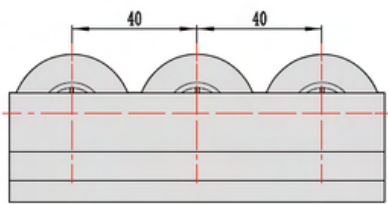
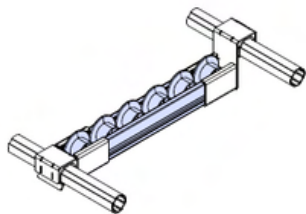
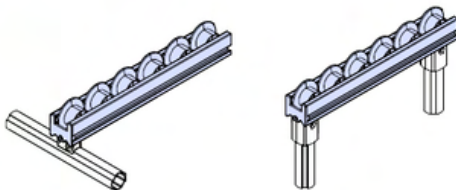
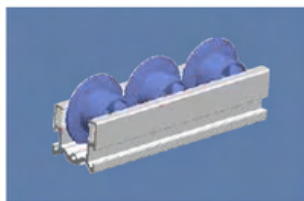
Model TFA.L-A4038PG

PQ 4 pcs/bundle

L 4 m

Material

6005T6+PP



RECOMMENDATIONS

Series de roller superiores 40, para frame de rigidez alta. Recomendado para gran volumen y peso rigido. De transmisión suave de productos
 40 series upper flow roller, high-rigidity frame, silent rolling, suitable for large volume, non-heavy weight and smooth transmission of products

Flow Roller Track (Aluminum Alloy)

Flow Roller Track (Aluminum Alloy)

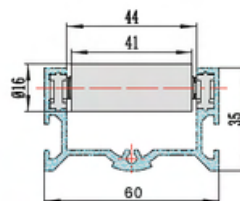
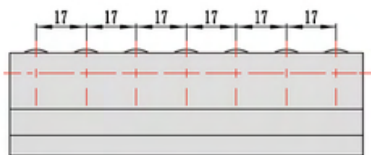
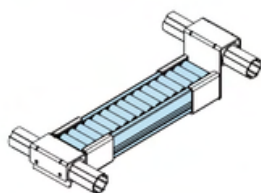
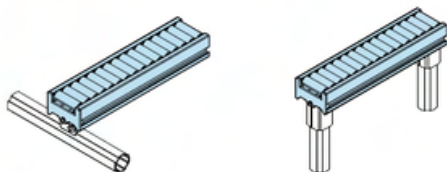
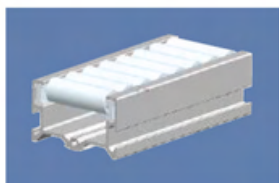
Model TFA.L-A6016PW

PQ 4 pcs/bundle

L 4 m

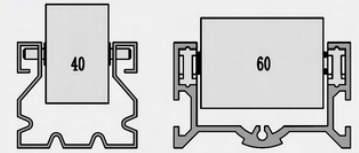
Material

6005T6+PP



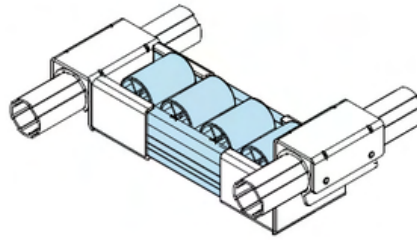
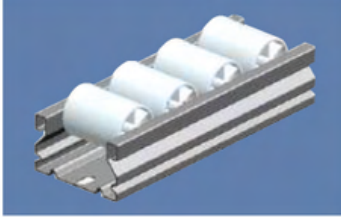
RECOMMENDATIONS

Series de roller superiores 60, para frame de rigidez alta. Recomendado para gran volumen y peso rigido. De transmisión suave de productos
 60 series upper flow roller, high-rigidity frame, silent rolling, suitable for large volume, non-heavy weight and smooth transmission of products



TFA.L Flow Roller Track

Flow Roller Track (CS Zinc)



Flow Roller Track (CS Zinc)

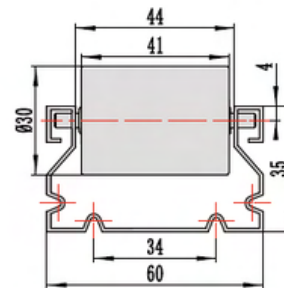
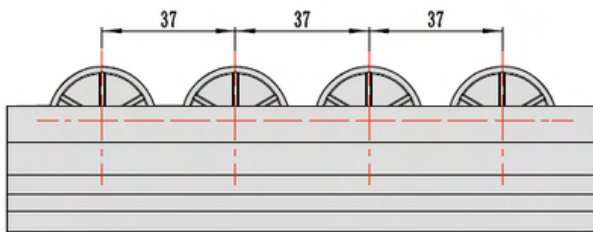
Model TFA.L-G6030PW

PQ 4 pcs/bundle

L 4 m

Material

6005T6+PP

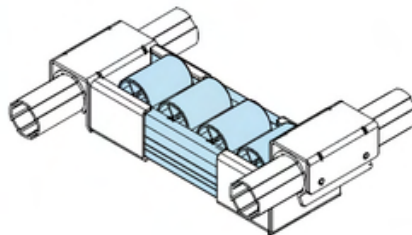
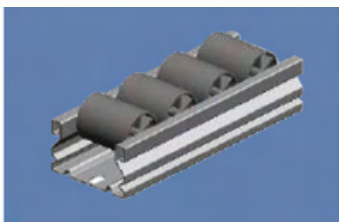


RECOMMENDATIONS

Series de roller básicos 60. Recomendado para gran volumen y peso rigido. De transmisión suave de productos.

60 series basic flow roller, strong applicability, rolling noise, suitable for large volume, heavy weight and smooth transmission of products.

Flow Roller Track (CS Zinc)



Flow Roller Track (CS Zinc)

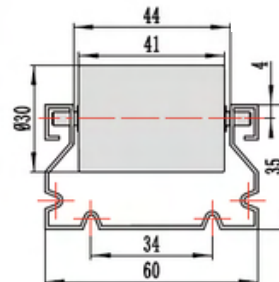
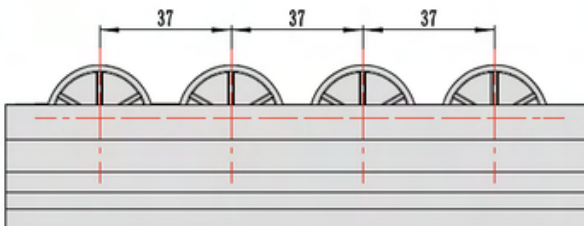
Model TFA.L-G6030PW

PQ 4 pcs/bundle

L 4 m

Material

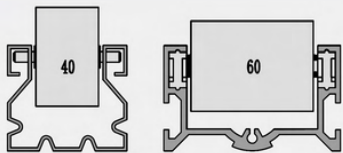
6005T6+PP



RECOMMENDATIONS

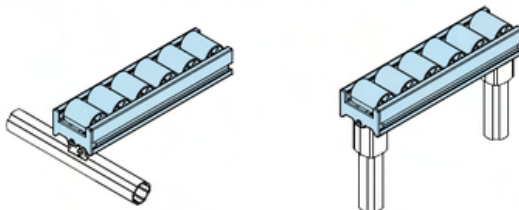
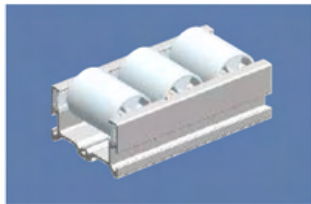
Series de roller basicos 60. Recomendado para gran volumen y peso rigido. De transmisión suave de productos

60 series basic flow roller, strong applicability, rolling noise, suitable for large volume, heavy weight and smooth transmission of products



TFA.L Flow Roller Track

Flow Roller Track (Aluminum Alloy)



Flow Roller Track (Aluminum Alloy)

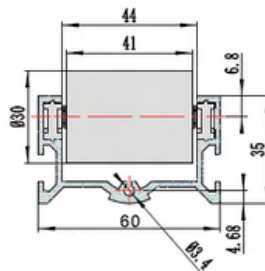
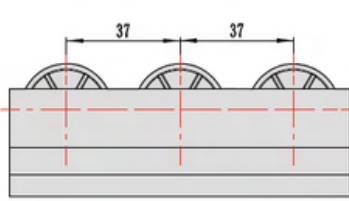
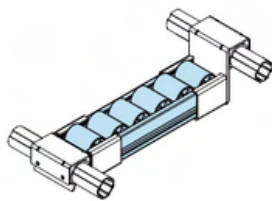
Model TFA.L-A6030PW

PQ 4 pcs/bundle

L 4 m

Material

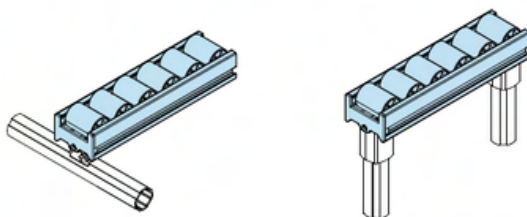
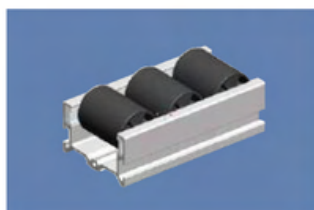
6005T6+PP



RECOMMENDATIONS

Series de roller superiores 60. Recomendado para gran volumen y peso rigido. De transmisión suave de productos
 60 series upper flow roller, high-rigidity frame, silent rolling, suitable for large volume, heavy weight and smooth transmission of products

Flow Roller Track (Aluminum Alloy)



Aluminum Flow Roller Track (curved)

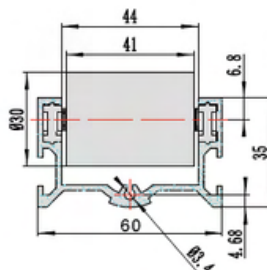
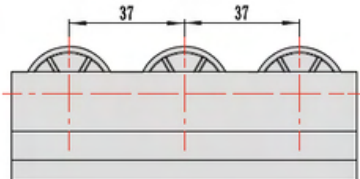
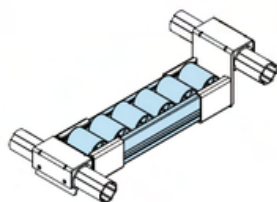
Model TFA.L-A4033CW

L 4 m

PQ 4 pcs/bundle

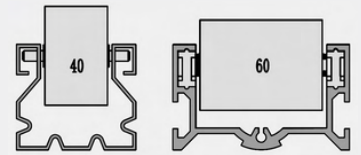
Material

6005T6+PP



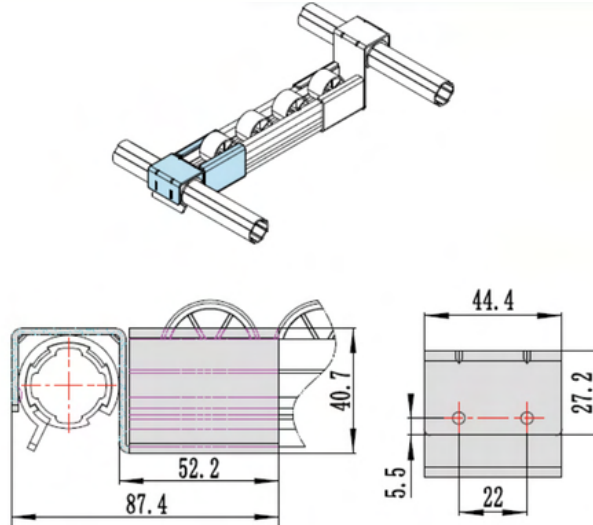
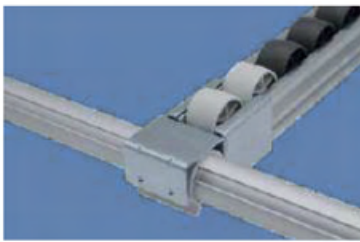
RECOMMENDATIONS

Series de roller superiores 60. Recomendado para gran volumen y peso rigido. De transmisión suave de productos
 60 series upper flow roller, high-rigidity frame, silent rolling, suitable for large volume, heavy weight and smooth transmission of products



TFA.L Flow Roller Track

Flow Roller Positioner



Flow Roller Positioner

Model	TFA.L-40A
NW	177 g/m
PQ	66 pcs
TW	12 kg
PD	305*235*165(mm)

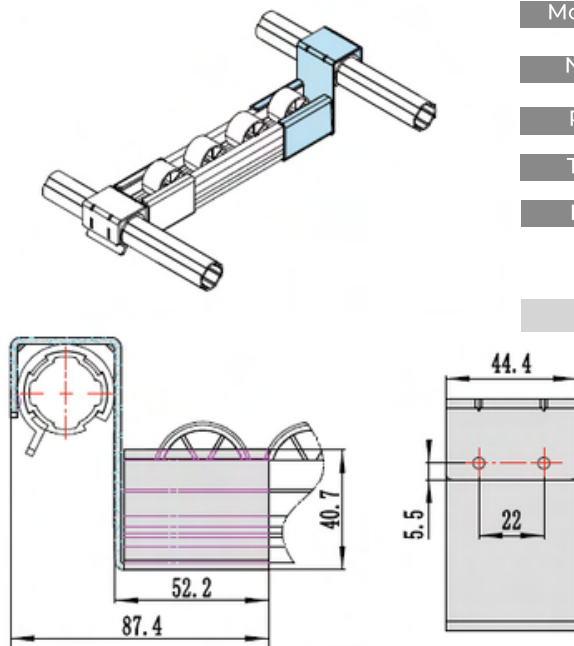
Material

CRCS

RECOMMENDATIONS

Accesorio plano. Compatible con TFA.L40-03
Flat input Positioner (Matched with TFA.L40-03)

Flow Roller Positioner



Flow Roller Positioner

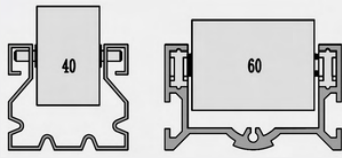
Model	TFA.L-40B
NW	205g/m
PQ	42 pcs
TW	8.8 kg
PD	305*235*165(mm)

Material

CRCS

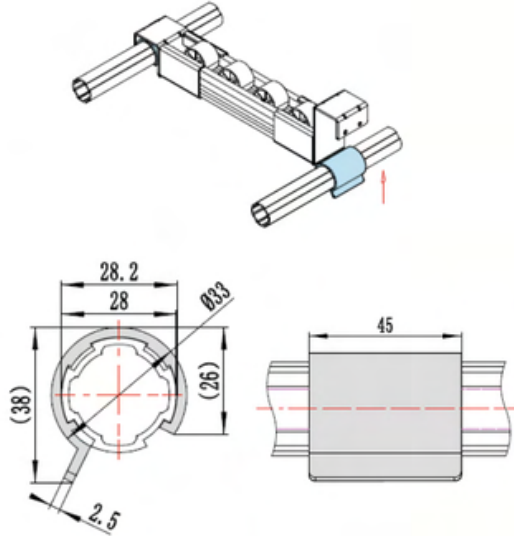
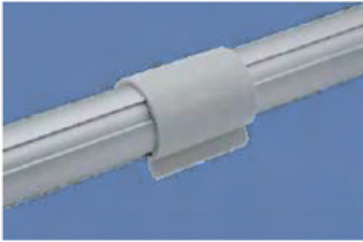
RECOMMENDATIONS

Accesorio más alto. Compatible con TFA.L40-03
Higher output Positioner (Matched with TFA.L40-03)



TFA.L Flow Roller Track

40 Positioner Sleeve



40 Positioner Sleeve

Model	TFA.L40-03
NW	7.5 g
PQ	160 pcs
TW	1.5 kg
PD	305*235*165(mm)

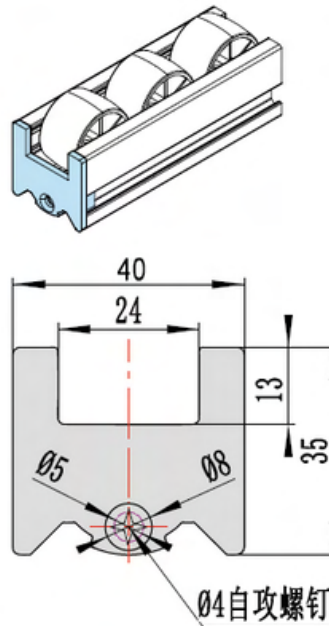
Material

PP

RECOMMENDATIONS

Accesorio más alto. Compatible con TFA.L40-03
Higher output Positioner (Matched with TFA.L40-03)

40 Aluminum Flow Roller Track Insert



40 Aluminum Flow Roller Track insert

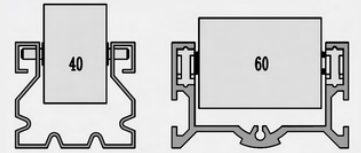
Model	TFA.L40-01
NW	3.4 g
PQ	700 pcs
TW	2.7 kg
PD	305*235*165(mm)

Material

PP

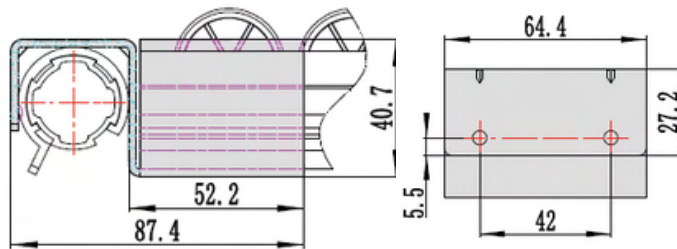
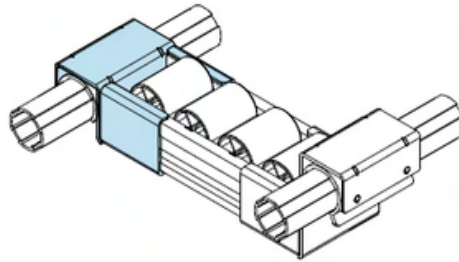
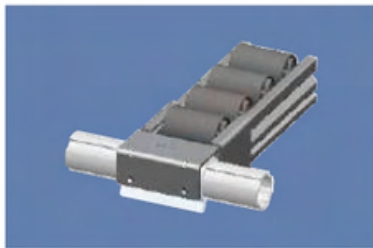
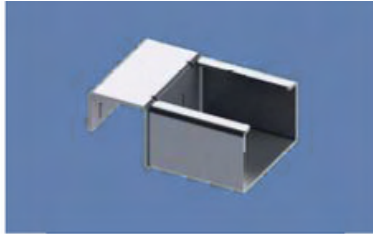
RECOMMENDATIONS

Usado para insertar aluminio de aleación 40
Used for insert of 40 Aluminum alloy Flow Roller



TFA.L Flow Roller Track

Flow Roller Positioner



Flow Roller Positioner

Model TFA.L-60A

PD 305*235*165(mm)

Material

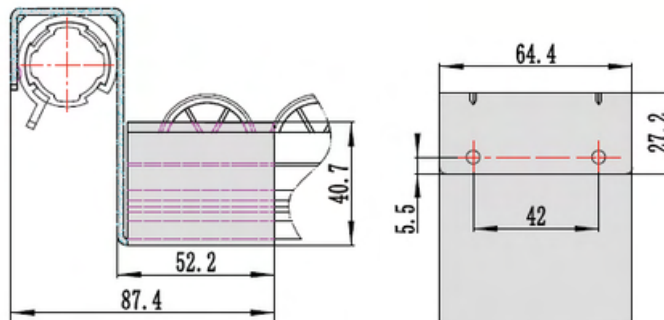
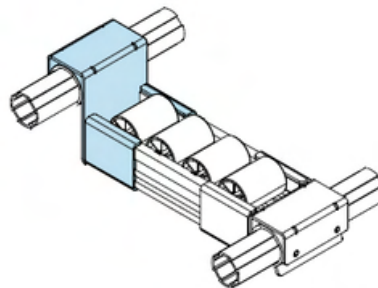
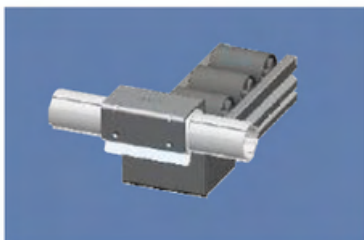
CRCS

RECOMMENDATIONS

Accesorio plano. Compatible con TFA.L60-03

Flat input Positioner (Matched with TFA.L60-03)

Flow Roller Positioner



Flow Roller Positioner

Model TFA.L-60B

PD 305*235*165(mm)

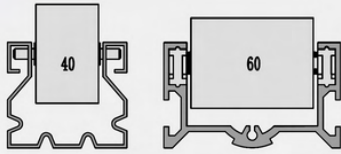
Material

CRCS

RECOMMENDATIONS

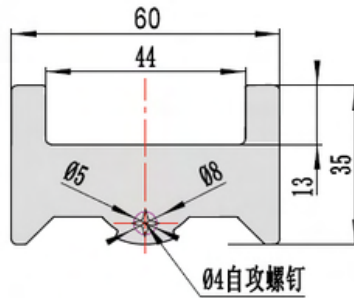
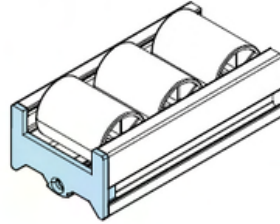
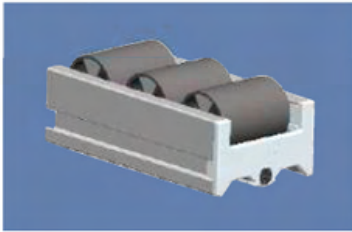
Accesorio más alto. Compatible con TFA.L60-03

Higher output Positioner (Matched with TFA.L60-03)



TFA.L Flow Roller Track

60 Aluminum Flow Roller Insert



60 Aluminum alloy flow roller insert

Model TFA.L60-01

PD 305*235*165(mm)

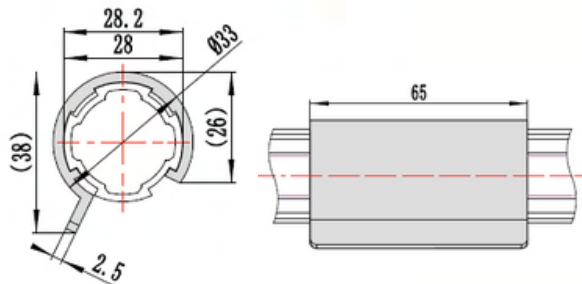
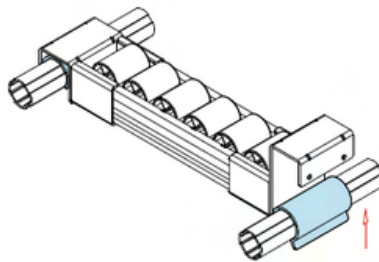
Material

PP

RECOMMENDATIONS

Usado para insertar el Aluminum 60.
Used for insert of 60 Aluminum alloy Flow Roller

60 Positioner Sleeve



60 Positioner Sleeve

Model TFA.L60-03

PD 305*235*165(mm)

Material

PP

RECOMMENDATIONS

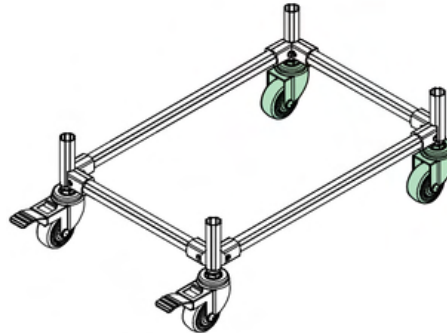
Usado para conectar el frame con el posicionador, con el propósito de proteger y ajustar.
Used for connecting frame and positioner, with purpose of protecting and tighten

TFAC





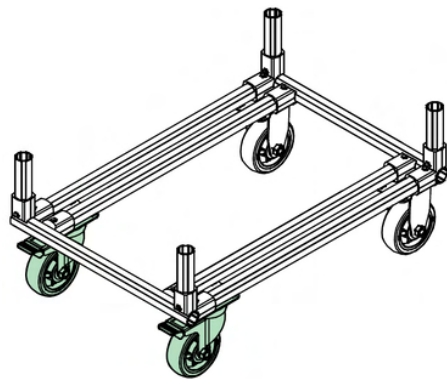
TFAC Castor Series



Screw Axis Caster

Model TFA.C.S3W.PU

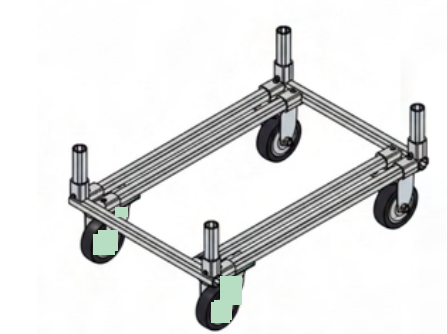
3" M10 free



Screw Axis Caster

Model TFA.C.S3WS.PU

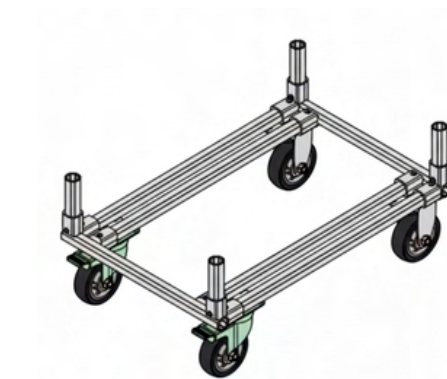
3" M10 free (Brake)



Screw Axis Caster

Model TFA.C.S4W.PU

4" M12



Screw Axis Caster

Model TFA.C.S4WS.PU

4" M12 (Brake)



TFAC Castor Series



Plate Caster

Model TFA.C.L3G.PU

3" Fixed



Plate Caster

Model TFA.C.L4G.PU

4" Fixed

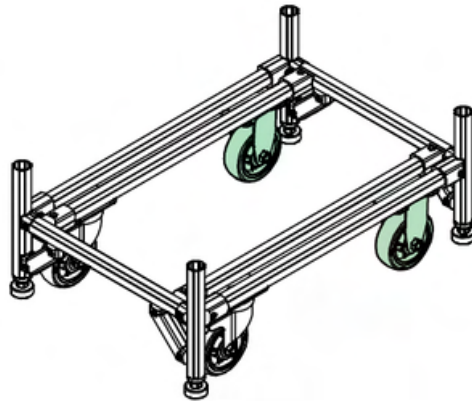


Plate Caster

Model TFA.C.L5G.PU

5" Fixed

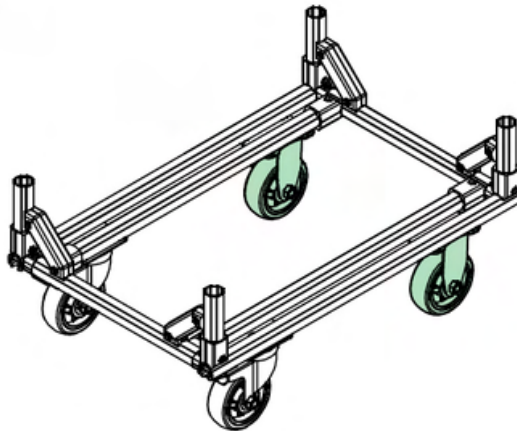


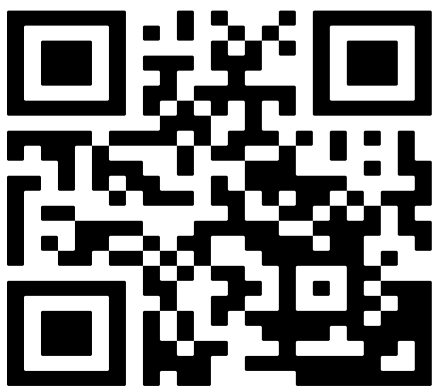
Plate Caster

Model TFA.C.L3W.PU

3" Free

CATALOGO 2026

Visita nuestra página web



**11395 James Watt Dr.
Suite A12
El Paso, TX 79936**



**El Paso, TX, USA +1 915 591 1711
Cd. Juarez, Chih, MEX +52 656 501 5618**



**sales@disentec.com
admin@disentec.com**