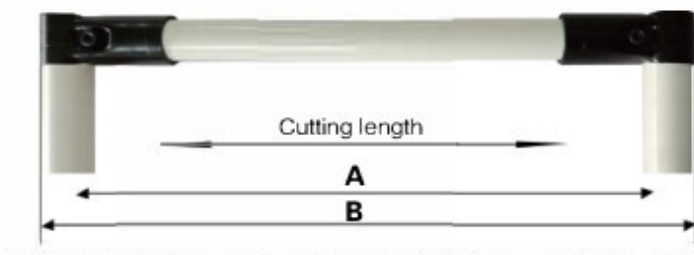


Lean pipe(Plastic coated pipe)



Technical Instructions for Line Bar Pipe(Lean Pipe)

Material	plastics / steel tube / rust proof layer
outer diameter	中 28mm
Inside diameter	中 216mm-24mm
Thickness	0.8mm
Colour	White, black, red, yellow, blue, green
Specifications	L=4000mm



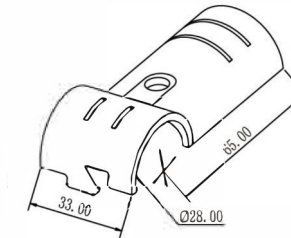
Plastic pipe length = outer dimension B-103mm = center-to-center distance dimension A-70mm

length	length	0.8mm	1.0mm	1.2mm	1.5mm	2.0mm
400mm		165kgf	215kgf	260kgf	305kgf	365kgf
900mm		85kgf	100kgf	135kgf	180kgf	220kgf
1000mm		78kgf	100kgf	120kgf	140kgf	170kgf
1100mm		75kgf	97kgf	112kgf	133kgf	165kgf
1300mm		65kgf	84kgf	104kgf	101kgf	134kgf
1500mm		55kgf	70kgf	85kgf	86kgf	101kgf

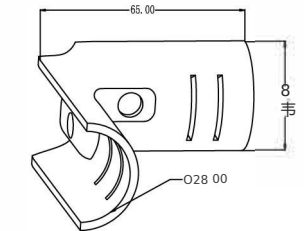
Remarks.

1. The above load is the theoretical load,
2. The carrying environment is normal temperature and pressure, and the air pH is neutral
3. The above default material is Q235B, allowing deflection to L/180;
4. The test speed is less than 5mm / minute,
5. The bearing structure is a simple support beam structure

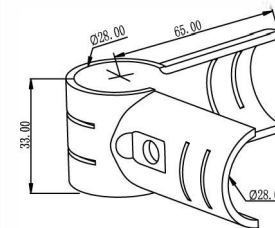
Joint electrophoresis, galvanizing, Chrome plating



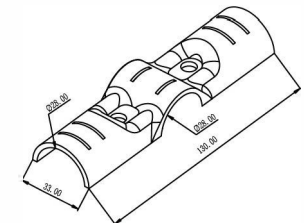
Model Name	H-1 Single joint
Material	SPCC
Weight	64g/2.3-2.5mm



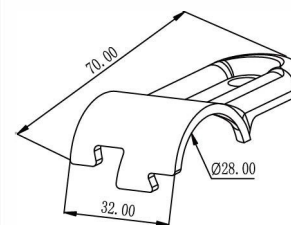
Model Name	H-2 Single joint
Material	SPCC
Weight	85g/2.3-2.5mm



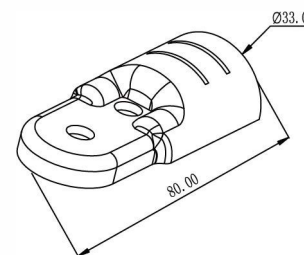
Model Name	H-3 Single joint
Material	SPCC
Weight	113g/2.3-2.5mm



Model Name	H-4 Single joint
Material	SPCC
Weight	102g/2.3-2.5mm

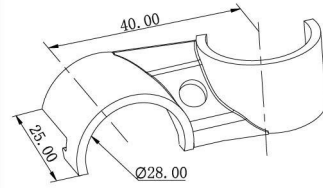


Model Name	H-5 Single joint
Material	SPCC
Weight	41 g/2.3-2.5mm

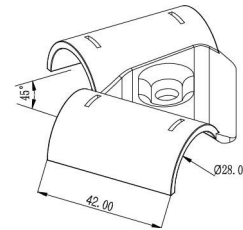


Model Name	H-6 Single joint
Material	SPCC
Weight	55g/2.3-2.5

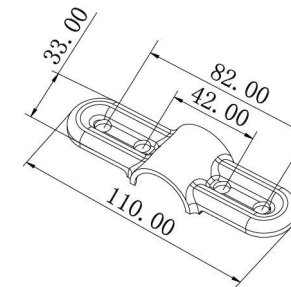
Monolithic joint



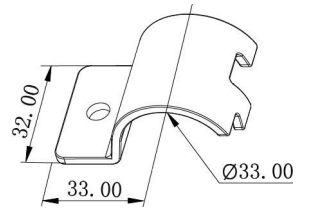
Model	H-7
Name	Single joint
Material	SPCC
Weight	43g/2.3-2.5mm



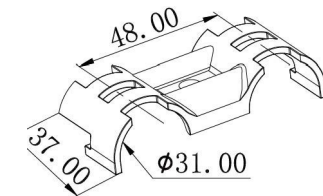
Model	H-8
Name	Single joint
Material	SPCC
Weight	62g/2.3-2.5mm



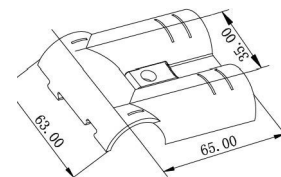
Model	H-14
Name	Single joint
Material	SPCC
Weight	62g/2.3-2.5mm



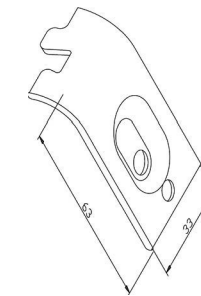
Model	H-15
Name	Single joint
Material	SPCC
Weight	38g/2.3-2.5mm



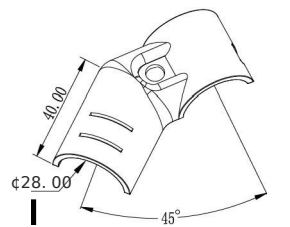
Model	H-9
Name	Single joint
Material	SPCC
Weight	64g/2.3-2.5mm



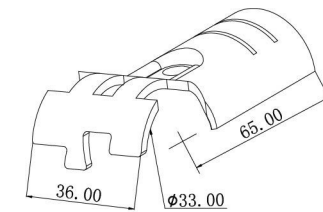
Model	H-10
Name	Single joint
Material	SPCC
Weight	130g/2.3-2.5mm



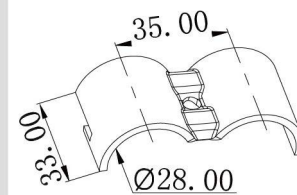
Model	H-16
Name	Single joint
Material	SPCC
Weight	37g/2.3-2.5mm



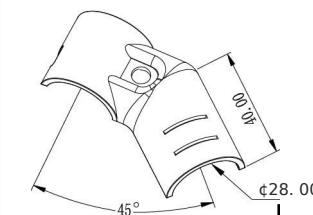
Model	H-17
Name	Single joint
Material	SPCC
Weight	64g/2.3-2.5mm



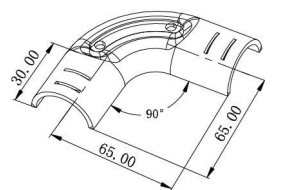
Model	H-12
Name	Single joint
Material	SPCC
Weight	62g/2.3-2.5mm



Model	H-13
Name	Single joint
Material	SPCC
Weight	50g/2.3-2.5mm



Model	H-18
Name	Single joint
Material	SPCC
Weight	63g/2.3-2.5mm



Model	H-90
Name	Single joint
Material	SPCC
Weight	93g/2.3-2.5mm

Monolithic joint



H-1X2+M6X1

HJ-1



H-2X1 +H-3X1 +M6 X2

HJ-2



H-17X1+H-18X1+ M6X1

HJ-9



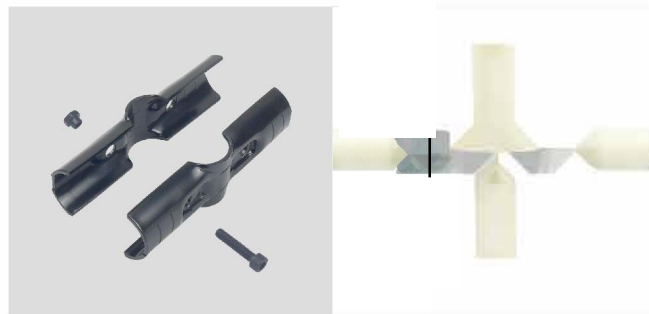
H-12X2+J-140X1+M6 X1

HJ-10



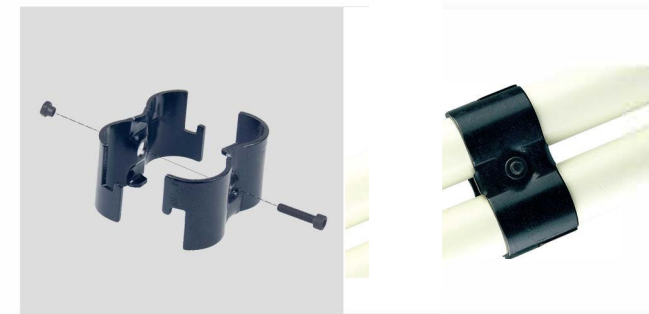
H-2X2+H-4X1 +M6X3

HJ-3



H-4X2+M6X2

HJ-4



H-13X2+M6X1

HJ-11



H-6X4+H-14X2+M6 X6

HJ-12



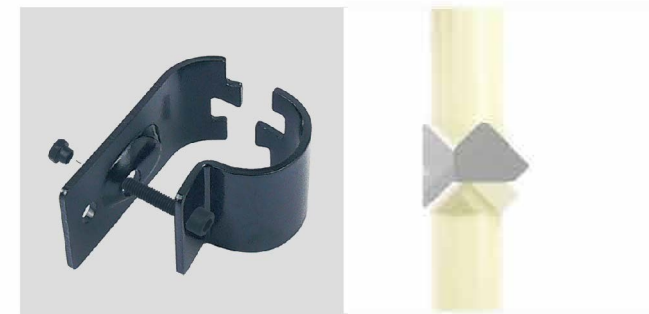
H-2X4+M6X4

HJ-5



H-7X2+M6X1

HJ-6



H-15X1+H-16X1+M6 X1

HJ-13



H-8X2+M6X1

HJ-15



H-SX2+H-6X2+M6X2

HJ-7



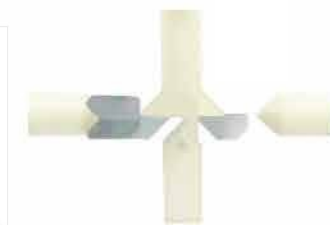
H-9X2+J-140X2 +M6X1

HJ-8



H-90X2+M6X2

HJ-16



• Chuck
 • Used cold rolled steel plate
 • The horizontal and vertical grip of the chuck is 64kg
 • The test is carried out at room temperature and the traction rate is 5mm/min
 • Chuck clamping load test: The ultimate load of the chuck under the following test conditions is 80kg
 • Overlay tube support - Centralized load-bearing
 • Load loading speed 50mm/min - Ambient temperature:20°C
 *The above is the laboratory test data, the actual use load should not exceed 80% of the test data.

Because of its convenient and fast installation, the items placed on the top run smoothly and smoothly. As the name suggests, it is called a fluent bar. It

is mostly used for workshop materials and other uses. Flow bars are mainly used for storage, shelf supporting products, can be used as slides, guardrails,

guide devices. Fluency bar is a special shelf composed of type steel and roller slide. It is widely used in the sorting area of the assembly line and logistics

distribution center of the factory. It can be combined with digital sorting system to greatly improve the material sorting and distribution efficiency



EF-2040C

EF-2040D




EF-2040P

EF-2040DW


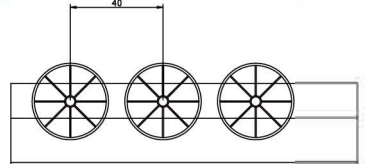


EF-2040E

	<p>Framing: 40m-35mm Thickness: 0.8mm Wheel /ABS PE 33mm*20mm Axis spacing: 40mm Bear the weight of: 10kg</p>	<p>Height: 42.5mm Material quality: 45</p>
---	---	--


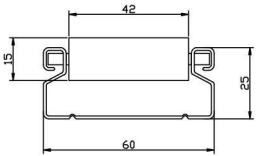
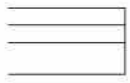
40*35

40*35 Aluminum alloy fluent article

	<p>Framing: 40mm*35mm Thickness: 1.2mm Wheel/PE/ABS: 33mm*20mm Axis spacing: 40mm Bear the weight of: 10kg</p>	 <p>Height: 42.5mm Material quality: 45</p>
---	--	--


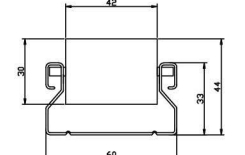

60*25

60 * 25 enhance sheet metal fluent article

	 <p>Framing: 60mm*25mm Thickness: 1.0mm Wheel/PE: 15mm*42mm Axis spacing: 16mm Bear the weight of: 25kg</p>	 <p>Height:30mm Material quality: 45</p>
--	--	---


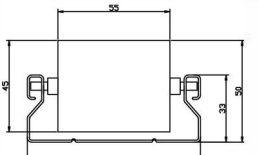
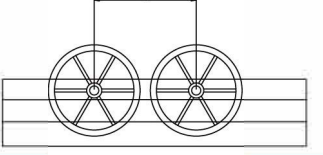
60*33

60 * 33 enhance sheet metal fluent article

	 <p>Framing: 60mm*33mm Thickness: 0.8mm Wheel/PE: 30mm*42mm Axis spacing: 36mm Bear the weight of: 20kg</p>	 <p>Height: 44mm Material quality: 45</p>
---	--	--

85*33

85*33 Enhance sheet metal fluent article

	 <p>Framing: 85mm*33mm Thickness: 1.2mm Wheel/ PE: 45mm*55mm Axis spacing: 50mm Bear the weight of: 60kg</p>	 <p>Height: 50mm Material quality: 45</p>
---	---	--



Stainless steel tube end cap



End cover



Foot cover



Hook



Bushing



Tab card clasp



Screw



MS-Screw



Large metal adjustable feet



Large steel plastic adjustable foot



Small steel plastic adjustable foot



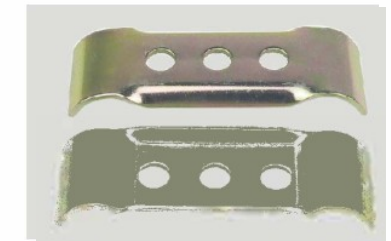
Small metal foot



Plastic card slot



Plastic joint



Wheel splint



Metal binder



Metal unilateral CLIP



Tab holder



Plastic desktop clasp



Wirebeam splitter



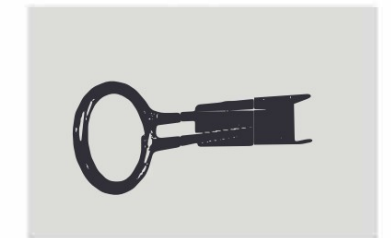
Desktop flat washer



Fluent brake pads

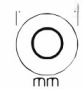
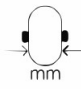

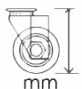



M12 nut



Traction hook



Wheel material	Wheel diameter	Wheel width	Load-Bearing	Install Height	
	sketch map 				
polyurethane	3" (75)	32	80	108	108
White	4" (100)	32	90	130	130
Gray artificial glue	5" (125)	32	100	156	156

High strength density plate



Features and Applications
 High temperature synthesis using mixed materials
 Wear resistance is not easy to deform
 Good economy
 For worktables and laminates
 Different types of patches can be used

High strength density plate



Features and Applications
 Double sided Melamine
 Smooth and waterproof surface
 For worktables and laminates

Static Radio Panel



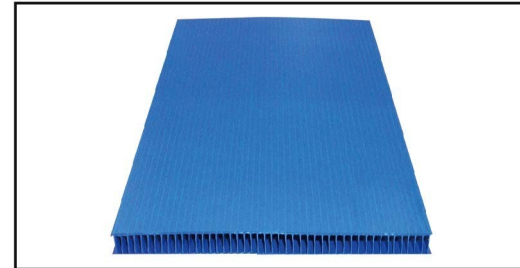
Features and Applications
 Anti-static pads
 For electronic anti-static products
 Smooth and smooth surface

Stainless steel veneer



Features and Applications
 Used in evolution and magnetic field protection
 Smooth surface, corrosion resistant
 Fire proof, moisture proof
 Acid and alkali resistance and wear resistance

Middle board



Features and Applications
 Impact resistance, high precision
 Anti-moisture, anti-corrosion
 Applicable to high strength requirements table or laminate



Fluent strip shelf series



Production line series



